

2021 Halfmann - Beckton *Profit Through Experience Sale*

Wednesday, October 6, 2021 • 1 pm
at the ranch in Miles, TX

130 Age-Advantage Red Angus Bulls
180 Bred Commercial Red Angus Females



1 Beckton
Red Angus
Foundation Herd of the Red Angus Breed

HALFMANN
— LAND & LIVESTOCK —

Raised with Tradition • Bred for Profit • Developed to Last

Welcome to the Halfmann-Beckton Red Angus Sale!

Dear Friends,

Please join us on Wednesday, October 6th at the Halfmann ranch near Miles, Texas for the 2021 edition of our "Profit Through Experience Sale". The Halfmann and Forbes families have over 130 years combined experience in supplying genetics to cow/calf producers. Our respective programs' longevities are largely due to our continued focus on producing Red Angus seedstock that balance the necessary traits to sustain rancher profitability.

There's no single trait solution for cow/calf profitability, but rather the accumulation of successful observations across the entire enterprise. Measured in more live calves, higher pregnancy rates, reduced replacement rates and cows lasting for more calf crops, these cumulative successes ultimately result in more total pounds of calf produced per acre. Throughout this 2021 sale catalog, you'll find genetics that balance calving ease, pay-weight, reproductive traits, lower cow feed inputs, and calf value traits, and those genetics will be delivered by masculine, athletic Age-Advantaged bulls that are ready for heavy service in big country.

The spring of 2021 wound up being one of the strongest bred female markets we've seen in several years, and calf and yearling prices this summer have explained some of that demand. Routinely Red Angus yearlings from reputation genetics have grossed \$1,300-1,400 per head.

In addition to 130 Age Advantage bulls, Beckton and Halfmann Red Angus have come together to offer 180 head of commercial Red Angus females, which will sell from their respective ranch. These females result from the same sire lines that produced our 2021 bull offering, so they are loaded with genetics for easy calving, easy keeping, fertility, longevity, and low maintenance costs.

As you study the catalog if you have any questions, or need someone to assist you in bull selection, please feel free to give either of our operations a call. We look forward to seeing you on October 6th!

Halfmann Red Angus & Beckton Red Angus



CODY, GLEN & CHAD HALFMANN



TRISH & CAM FORBES



Cam Forbes Office: 307-674-6095
Evenings: 307-674-8162

37 Beckton Drive Sheridan, WY 82801
becktonwyo@gmail.com
BecktonRedAngus.com



Office 325.468.2390
Glen 325.895.0544 • Cody 325.245.8928 • Chad 325.374.6116
2501 CR 357 Miles, TX 76861
info@halfmann.ag • halfmann.ag

Auctioneer

Roger Jacobs Billings, MT
Cell: 406-698-7686

Livestock Representatives

Rachael Oliver - Red Angus Association
Commercial Marketing Specialist
Cell: 406 480-1569

Ralph Means - Weekly Livestock Reporter
Cell: 817-235-9708

Scott Farmer - Special Assignment
Cell: 817-597-1731

Justin Stelzer - Special Assignment
Cell: 817-992-7059

Sale Location - Halfmann Ranch

From San Angelo, Texas, head east on US 67 to Miles, proceed through Miles for 2.4 miles. Left onto County Road 357 to ranch.
From Ballinger, Texas, head west on US 67 to Rowena, proceed through Rowena for approximately 6 miles. Turn right onto county road 357 to ranch. Geographical location: 31.610411,-100.144257.

Airline Info

San Angelo Airport Regional Airport
American Airlines flies into San Angelo, Texas (30 miles from Halfmann Ranch).

Midland International Airport
Continental and Southwest Airlines fly into Midland, Texas (125 miles from Halfmann Ranch).

Hotel Accommodations

Courtyard by Marriott, San Angelo
2572 Southwest Blvd - 325-703-6400

Holiday Inn Express, San Angelo
4613 W Houston Harte Expressway - 325-223-2200

Comfort Suites, San Angelo
4450 W Houston Harte Expressway - 325-944-8600

Candlewood Suites, San Angelo
4587 W Houston Harte Expressway - 325-947-9400

Executive Inn, Ballinger
1005 Hutchins Ave - 325-365-5717

Online Supplemental Information:

Color photos, supplement information, videos and catalog available on our website: Halfmann.ag.

Cattle Viewing

Videos are available online at Halfmann.ag. All bulls and Halfmann's commercial heifers will be on display at 12 noon the day prior to the sale at Halfmann Ranch Headquarters, Miles, Texas. The Beckton commercial females will be available for viewing and delivered from their ranch in Sheridan, Wyoming.

Delivery

- Bulls will be delivered free of charge to central points for the first 400 miles from Miles, TX. All miles beyond 400 will be at cost.
- Registered females will be delivered at cost.
- Buyers whose bull purchases total \$18,000 or greater will receive free delivery to central points within the continental US.
- Buyers who haul their own animals on sale day can deduct \$100 per bull from their purchases.
- Halfmann commercial females sell FOB according to their lot description. Beckton will provide free trucking on purchase of 40 or more commercial females to Miles, TX or equivalent (1150).

We will deliver cattle 1 to 3 weeks after the sale, although we will try to accommodate you if you need your bulls right away. We will make every effort to deliver your purchases to a central point as close as possible to your ranch.

All deliveries are at buyer's risk. We recommend insuring your purchases.

Insurance

Insurance will be available to purchase on sale day at checkout

Feeding

Please arrange to pick up or receive your purchases. Halfmann Ranch will begin shipping on the Monday following the sale. We will hold cattle if needed for 10 days following the sale. Afterwards, purchased cattle will be assessed for feed at \$5/head/day.

Absentee Bids

If you are unable to attend the sale, we can help you select the bulls or females to fit your needs. We guarantee Sight Unseen Purchase Satisfaction. Contact us or one of the livestock representatives before the sale. Your bid will be handled confidentially.

Herd Health

We have a comprehensive herd-wide health program which includes vaccinations for 7-Way, IBR, BVD, PI3, BRSV, Lepto, and ivermectin. The heifers are also vaccinated for bangs and vibrio. All Halfmann animals have been tested negative for BVD PI. All the bulls will have a general health and fertility examination by sale day. Breeding information will be available on sale day. Interstate health papers will be furnished for each animal in accordance with Federal Regulations.

International Buyers: it will be the responsibility of the buyer to cover the costs of any testing required for export outside of the United States.

Sale Day Lunch

A barbecue lunch will be served on sale day starting at 11 am. The lunch will be sponsored by **Gorman Milling Company/Red Chain Feeds**.

Auction Format:

Selling in catalog order by recorded video. May bid in person at Halfmann Ranch in Miles, TX, by phone with a livestock representative, or through Superior Productions (see next page for phone and computer instructions).



GLEN & DIANE HALFMANN



CODY, LAURA, EMILY, WILLIAM & MATTHEW HALFMANN



CHAD & MORGAN HALFMANN



How To Participate As An Absentee Buyer

We have made preparations to bid and buy livestock through Superior Productions' "Call or Click-To-Bid" service for those unable to attend in person on sale day. **Please note that all of the lots in the sale will also be available for viewing online prior to sale day at superiorlivestock.com.**

Here's How It Works

Turn in Bids Over the Phone

This is our traditional method of buying livestock and is the suggested process for anyone who does not have consistent, high-speed internet. To get started simply go online to superiorlivestock.com and click on the tab titled "Register for a Buyer Number". Select the registration form for Superior Productions and print the registration form. Fill it out and fax it in to Superior Productions at 817-378-3380 with a signature on it, or scan and email the form to info@superiorauction.com. You can also mail it in to the address provided on the form. Upon receipt of this information Superior will call you with a buyer's number and the bid line phone number that you will use on sale day to place bids over the phone.

Click-To-Bid

This is Superior's online bidding program for cattle buying. **Please note that high-speed internet is required – this is not for dial-up or satellite internet.** Registration is free, but you must become a member of superiorclicktobid.com to sign up. Becoming a member is easy – just go to the homepage of superiorclicktobid.com and follow the outlined steps to get started. Input your information and select a username and password. You will receive an e-mail confirming you are a member. From that point forward you just have to sign in and select the sale you would like to register for and once approved by the ranch you will receive an email confirming which sale you are now registered for.

Viewing the Auction

There are 2 places to view the sale broadcast live on the internet: www.superiorlivestock.com or www.superiorclicktobid.com. Just go to the home page of either website and select the auction. If you just want to watch the auction on your computer, smartphone, or tablet, go to www.superiorlivestock.com. If you want to bid over the computer, you must go to www.superiorclicktobid.com. Remember, you can call in to bid on the internet, but you must be a member of www.superiorclicktobid.com to "click-to-bid". Your computer must have Flash Media Player installed for this website to view the auction. If you have any questions, please call the Superior Productions office at 800-431-4452.



CHANO HERNANDEZ



ALFONSO CARLOS



MICHAEL CAPPS



BELLA,
HERD MANAGER



JONNA & KIRK
BOATRIGHT, CLERKING
& LOAD OUT



DOUG TAYLOR,
LOADOUT



ROGER JACOBS,
AUCTIONEER

If you plan to bid by phone through Superior Livestock or 'Click-to-Bid', you must register at

www.superiorlivestock.com prior to bidding.

RED CHAIN FEEDS

THE BRAND TO TRUST.



Since 1969, Gorman Milling Company has proudly supplied Texas cattle raisers with quality mixed feeds, pellets, cubes, and commodities under the Red Chain Feeds brand name. Whether you own a couple of cows or a couple thousand, we remain dedicated to providing you with the products and expertise needed to help your operation flourish.

REDCHAINFEEDS.COM

GORMAN MILLING COMPANY, INC
Gorman, Texas | (800) 588-2252

RED ANGUS BULLS

LOT 1



Lot 1

Sale Catalog Data:

Animal ID & Herd Prefix: 1
Date of Birth: 10-15-2019
Sale Lot #: 1
RAAA Category & % Red Angus: CFH:G645 | 1A (100%)
Red Angus Assoc Registration #: #4187564

Actual Birth Weight: 63
Scrotal Circumference: 38
Relative Frame Size: M (Med)

Calving Ease, Weight, & Repro Traits EPDs & percentile ranks (lower row)

CED = Calving Ease Direct
 BW = Birth Weight
 WW = Weaning Weight
 YW = Yearling Weight
 MLK = Milk
 HPG = Heifer Pregnancy Rate
 CEM = Calving Ease Maternal
 STY = Stayability

Animal	CED	BW	WW	ADG	YW	MLK	HPG	CEM	STY	MRB	REA	HB	GM
HALFMANN MERLIN NC G645	19	-7	69	0.28	114	36	14	10	15	0.39	0.23	73	31
LJC MERLIN T179													
LJC MISSION STATEMENT P27													
BUF CRK REDPRIDE N179													
WFL MERLIN 018A													
WFL COMMITMENT 042Y													
BROWN COMMITMENT S7206													
WFL JEWELMAKER 9024													
LSF NIGHT CALVER 9921W													
MESSMER PACKER S008													
LSF DELLA P4078 U8051													
HALFMANN SIERRA NC C260													
HALFMANN SIERRA SY A857													
BROWN SYNERGY X7838													
HALFMANN SIERRA NB X467													

Individual Data

act. BW	63
SC	38
Frame	M

HerdBuilder Index & Percentile Rank
 Profitability derived per cow exposed when bulls are mated to heifers and mature cows, replacements are retained and all progeny are fed and sold on a value based grid.

GridMaster Index & Percentile Rank
 Profitability derived per cow exposed when bulls are mated to mature cows, no replacements are retained and all progeny are fed and sold on a value based grid.

Carcass EPDs & Percentile Rank
 MARB = USDA Marbling Score
 REA = Ribeye Area (in²)

Average Daily Gain EPD
 Post-weaning growth expressed in pounds per day. A bull with a .20 ADG EPD would be expected to sire progeny that gained .10 lb/day more than a bull with a .10 ADG EPD provided were fed the same ration in the same environment, etc.

dam's age & weight
 actual age & weight taken of the dam of that animal at weaning

dam's MPPA
 most probable producing ability

Age of Dam: 5 | Dam Weight: 1100 | dMPPA: 109

1 HALFMANN PREDICTION G645
 10-15-2019 | CFH: G645 | 1A (100%) | #4187564

LJC MERLIN T179 | LJC MISSION STATEMENT P27
 BUF CRK REDPRIDE N179

WFL MERLIN 018A
 WFL COMMITMENT 042Y | BROWN COMMITMENT S7206
 WFL JEWELMAKER 9024

LSF NIGHT CALVER 9921W | MESSMER PACKER S008
 LSF DELLA P4078 U8051

HALFMANN SIERRA NC C260
 HALFMANN SIERRA SY A857 | BROWN SYNERGY X7838
 HALFMANN SIERRA NB X467

CED	BW	WW	ADG	YW	MLK	HPG	CEM	STY	MRB	REA	HB	GM
19	-7.0	69	0.28	114	36	14	10	15	0.39	0.23	73	31
2%	1%	16%	14%	14%	1%	12%	6%	63%	53%	23%	33%	56%

Age of Dam: 5 | Dam Weight: 1100 | dMPPA: 109



Halfmann Sierra NC C260 - Dam of Lot 1

Prediction's sire, Merlin 018A has earned the reputation of being one of Red Angus' best options for improving both foot structure and feed efficiency. Prediction is a dual threat with an amazing 19 CED to 114 YW spread – that adds up to more calves to sell and more pounds per calf. And, he packages impressively clean front end, a long, level hip structure, tight sheath, slick hair coat, and comes out of a 109 MPPA dam.

We would like to collect this bull to use in our program.



Lot 2

2 HALFMAN STABILITY H676

01-28-2020 | GKH : H676 | 1A (100%) | #4274307

BROWN REVELATION P7021 BFCK CHEROKEE CNYN 4912
BROWN MS VICILA M7799

BROWN ORACLE B112
BROWN MS P707 Y6648 BECKTON NEBULA P P707
BROWN MS JULIAN W6579

BECKTON NEW ERA Y194 BECKTON NEBULA P P707
BKT LARKEISA T310 JC

HALFMANN FLOWER NE B062
HALFMANN DESTINY T351 5L DESTINATION 893-6215
BROWN MS VACATION P6837

Individual Data	
act. BW	70
SC	40
Frame	M

CED	BW	WW	ADG	YW	MLK	HPG	CEM	STY	MRB	REA	HB	GM
15	-3.5	69	0.25	110	23	11	7	17	0.73	0.50	55	64
16%	20%	16%	31%	21%	69%	47%	57%	30%	4%	3%	69%	5%

Age of Dam: 6 | Dam Weight: ET | dMPPA: 101

With 10 traits plus two indices in the Top 25% of Red Angus, it's easy to see how this powerfully made Oracle son will put your herd on solid ground for generations to come. His dam is a "prototype" Halfmann donor – deep bodied, wide sprung and pretty uddered. His maternal grandam earned a 111 MPPA as 9-year-old.

We would like to collect this bull to use in our program.

Halfmann Flower NE B062, Dam of Lots 2 & 3



3 HALFMAN STADFAST H678

01-30-2020 | GKH : H678 | 1A (100%) | #4274487

BROWN REVELATION P7021 BFCK CHEROKEE CNYN 4912
BROWN MS VICILA M7799

BROWN ORACLE B112
BROWN MS P707 Y6648 BECKTON NEBULA P P707
BROWN MS JULIAN W6579

BECKTON NEW ERA Y194 BECKTON NEBULA P P707
BKT LARKEISA T310 JC

HALFMANN FLOWER NE B062
HALFMANN DESTINY T351 5L DESTINATION 893-6215
BROWN MS VACATION P6837

Individual Data	
act. BW	72
SC	40
Frame	M+

CED	BW	WW	ADG	YW	MLK	HPG	CEM	STY	MRB	REA	HB	GM
17	-5.2	67	0.25	108	23	10	8	19	0.66	0.45	65	60
5%	5%	23%	28%	24%	69%	75%	33%	10%	8%	4%	48%	8%

Age of Dam: 6 | Dam Weight: ET | dMPPA: 101

Here's the full brother to Lot 2 and this one comes with even more Calving Ease, Stayability and HerdBuilder. He also scanned off the chart with a 132 IMF ratio and a 105 REA ratio, so if you've never won a gridmaster jacket, here's your opportunity! If you really want to ratchet up your calf value, buy both brothers and turn them out on your best 50-60 wet two-year-olds.

We would like to collect this bull to use in our program.



Lot 3

4 HALFMAN CERTAINTY H673

01-25-2020 | GKH : H673 | 1A (100%) | #4274481

LJC MERLIN T179 LJC MISSION STATEMENT P27
BUF CRK REDPRIDE N179

WFL MERLIN 018A
WFL COMMITMENT 042Y BROWN COMMITMENT S7206
WFL JEWELMAKER 9024

BROWN SYNERGY X7838 BECKTON NEBULA P P707
C-BAR & BROWN ABIGRACE

HALFMANN MINOLA SY F168
BECKTON MINOLA U378 JL BECKTON JULIAN G3 P608
BECKTON MINOLA M155 CE

Individual Data	
act. BW	67
SC	41
Frame	M+

CED	BW	WW	ADG	YW	MLK	HPG	CEM	STY	MRB	REA	HB	GM
16	-4.4	67	0.27	109	35	10	7	13	0.52	0.13	43	45
14%	10%	25%	21%	22%	1%	73%	57%	83%	25%	42%	86%	27%

Age of Dam: 2 | Dam Weight: 914 | dMPPA: 103

Combining the soundness, docility and feed efficiency of Merlin with the cow herd building traits of Synergy should keep your banker happy for years to come. Certainty started out at only 67 lbs. but passed many contemporaries by weaning on the way to earning ratios of 106 WW, 110 ADG and 108 YW.



Lot 4

5 HALFMAN UPGRADE H752

02-09-2020 | CTH : H752 | 1A (100%) | #4274563

BROWN REVELATION P7021 BFCK CHEROKEE CNYN 4912
BROWN MS VICILA M7799

BROWN ORACLE B112
BROWN MS P707 Y6648 BECKTON NEBULA P P707
BROWN MS JULIAN W6579

HALFMANN NEBULA ALA838 HALFMANN NEBULA AQ Y597
HALFMANN ALEXIS NB Y602

HALFMANN MATTIE NB C354
HALFMANN MATTIE MS Y621 HALFMANN MSN STATEMENT T376
HALFMANN MATTIE T336

Individual Data	
act. BW	73
SC	42
Frame	M

CED	BW	WW	ADG	YW	MLK	HPG	CEM	STY	MRB	REA	HB	GM
16	-5	67	0.28	113	22	10	8	14	0.69	0.44	47	68
14%	6%	23%	12%	16%	76%	73%	37%	71%	6%	4%	81%	4%

Age of Dam: 5 | Dam Weight: 1035 | dMPPA: 99

Upgrade's stock went up with each trip through the chute as he bested his contemporaries with ratios of 106 WW, 115 ADG, 109 YW, 112 IMF and 114 REA. A serious curve-bender, upgrade spreads his lightest 6% BW EPD to the fastest gaining 12% for ADG – which translates to more calves and heavier calves.



Lot 5

6 BECKTON ACCENT H018 E4

02-17-2020 | BKT : H018 | 1A (100%) | #4377557

BECKTON ACCENT W180 C2 BECKTON CODY K1 P014
BECKTON CHRISTY R046 CQ

BECKTON ACCENT F602 L3
BECKTON LANA B670 L BECKTON LIKABLE U130 L2
BECKTON LANA Y541 W

BECKTON EPIC D002 E8 BECKTON EPIC B545 N7
BECKTON CHRISTY B701 E

BECKTON TAMARA F107 E
BECKTON TAMARA D428 N BECKTON NEBULA W486 D3
BECKTON TAMARA X628 E

Individual Data	
act. BW	69
SC	39.5
Frame	M

CED	BW	WW	ADG	YW	MLK	HPG	CEM	STY	MRB	REA	HB	GM
15	-3.1	54	0.22	89	28	11	6	20	0.36	0.25	90	27
22%	25%	72%	56%	66%	26%	51%	68%	3%	60%	20%	10%	67%

Age of Dam: 2 | Dam Weight: 825 | dMPPA: 100

H018 comes with a best 3% Stayability prediction, and should enhance cow herd profitability by increasing cow herd fertility and longevity, which lowers replacement rate and reduces cow herd depreciation costs.





Lot 7

7 BECKTON JULIAN H352 N9

03-25-2020 | BKT : H352 | 1A (100%) | #4377161

BECKTON JULIAN Z382 J7 BECKTON JULIAN X721 E6
BECKTON LARKABA X064 J

BECKTON JULIAN E423 N8
BECKTON BELGA B004 N BECKTON NEBULA Z111 N5
BECKTON BELGA Z031 N

BECKTON NEBULA T398 V3 BECKTON NEBULA L P093
BECKTON MINERVA J615 VG

BECKTON INDIGO A849 N
BECKTON INDIGO U465 EP BECKTON EPIC K4 N795
BECKTON INDIGO R559 HU

Individual Data	
act. BW	51
SC	36.5
Frame	M

CED	BW	WW	ADG	YW	MLK	HPG	CEM	STY	MRB	REA	HB	GM
22	-8.7	48	0.19	78	29	9	12	19	0.48	-0.36	85	28
1%	1%	86%	75%	83%	17%	82%	1%	8%	33%	99%	15%	63%

Age of Dam: 7 | Dam Weight: 1190 | dMPPA: 105

H352 defies the antagonisms combining Top 1% Calving Ease and Maternal Calving Ease. This means lower labor costs calving heifers, increased calf survival and more total pounds of pay-weight at weaning.

11 HALFMANN QUALITY H675

01-27-2020 | GKH : H675 | 1A (100%) | #4274391

BROWN REVELATION P7021 BFCK CHEROKEE CNYN 4912
BROWN MS VICILA M7799

BROWN ORACLE B112
BROWN MS P707 Y6648 BECKTON NEBULA P P707
BROWN MS JULIAN W6579

BECKTON NEW ERA Y194 BECKTON NEBULA P P707
BKT LARKEISA T310 JC

HALFMANN FLOWER NE B062
HALFMANN DESTINY T351 5L DESTINATION 893-6215
BROWN MS VACATION P6837

Individual Data	
act. BW	63
SC	38
Frame	M

CED	BW	WW	ADG	YW	MLK	HPG	CEM	STY	MRB	REA	HB	GM
17	-7.4	57	0.25	96	23	13	8	14	0.73	0.41	44	65
6%	1%	63%	32%	49%	69%	24%	37%	69%	4%	6%	85%	5%

Age of Dam: 6 | Dam Weight: ET | dMPPA: 101

If you didn't get one of the Oracle brothers that sold as lots 2 & 3, here's their full brother. Sleep all night calving ease but way more than just a heifer bull, Quality's best 4% marbling EPD is supported by a 132 IMF ratio.



Lot 11



Lot 9

8 BECKTON ACCENT H553 E4

04-07-2020 | BKT : H553 | 1A (100%) | #4376929

BECKTON ACCENT B553 L2 BECKTON ACCENT U777 C2
BECKTON LANA X839 L

BECKTON ACCENT F895 E3
BECKTON INDIGO U504 EP BECKTON EPIC K6 S569
BECKTON INDIGO S016 NB

BECKTON EPIC B310 J6 BECKTON EPIC X464 L5
BECKTON MINERVA Y116 J

BECKTON LARKABA F405 E
BECKTON LARKABA Y083 N BECKTON NEBULA W130 D3
BECKTON LARKABA W264 W

Individual Data	
act. BW	63
SC	34.5
Frame	M+

CED	BW	WW	ADG	YW	MLK	HPG	CEM	STY	MRB	REA	HB	GM
16	-2.3	62	0.25	102	28	13	8	14	0.44	0.04	65	36
12%	40%	41%	32%	36%	26%	20%	21%	66%	41%	63%	49%	46%

Age of Dam: 2 | Dam Weight: 800 | dMPPA: 100

This calving ease specialist comes with triple digit growth, a 107 ADG ratio and a big loin as evidenced by his 119 REA ratio.

12 HALFMANN POUNDMAKER H702

02-05-2020 | GKH : H702 | 1A (100%) | #4274351

BROWN REVELATION P7021 BFCK CHEROKEE CNYN 4912
BROWN MS VICILA M7799

BROWN ORACLE B112
BROWN MS P707 Y6648 BECKTON NEBULA P P707
BROWN MS JULIAN W6579

BECKTON NEBULA U031 D3 BECKTON NEBULA G S237
BECKTON MARTA S459 DM

HALFMANN INDIGO NB B103
BECKTON INDIGO S538 LO BECKTON LOKI C M740
BECKTON INDIGO M585 LN

Individual Data	
act. BW	82
SC	39
Frame	M+

CED	BW	WW	ADG	YW	MLK	HPG	CEM	STY	MRB	REA	HB	GM
13	-3.6	68	0.32	120	19	9	6	18	0.72	0.29	64	81
42%	18%	19%	3%	8%	94%	87%	78%	17%	4%	15%	51%	1%

Age of Dam: 6 | Dam Weight: 1010 | dMPPA: 101

Poundmaker proves you don't have to increase cow size to increase pay-weight. His mature dam only weighs 1000 lbs, but he pressed the scales to earn ratios of 111 WW, 111 YW and 112 ADG, and scanned a 122 IMF ratio.



Lot 12

9 HALFMANN BORN EASY H746

02-09-2020 | GKH : H746 | 1A (100%) | #4274345

5L ADVANTAGE 3267-221Y BUF CRK THE RIGHT KIND U199
5LADINA 195-3267

5L BOURNE 117-48A
5L ROXIE 854-117 5L SIGNATURE 5615
XXX ROXIE 854 MR

LSF NIGHT CALVER 9921W MESSMER PACKER S008
LSF DELLA P4078 U8051

HALFMANN MINERVA NC B053
HALFMANN MINERVA CH Y645 HALFMANN CHATEAU L610
HALFMANN MINERVA U307

Individual Data	
act. BW	69
SC	43
Frame	M+

CED	BW	WW	ADG	YW	MLK	HPG	CEM	STY	MRB	REA	HB	GM
16	-5.0	68	0.26	110	29	19	9	15	0.51	0.31	91	43
10%	6%	20%	24%	20%	19%	1%	19%	55%	27%	13%	9%	30%

Age of Dam: 6 | Dam Weight: 960 | dMPPA: 103

If you want triple-digit growth, but don't want to increase cow size or birth-weight here's your bull: lightest 6% BW to 110 YW best 10% Calving Ease and out of a mature 1000 lb. cow that produces above the herd average.

10 HALFMANN PRIME LOIN H730

02-07-2020 | CTH : H730 | 1A (100%) | #4274579

5L ADVANTAGE 3267-221Y BUF CRK THE RIGHT KIND U199
5LADINA 195-3267

5L BOURNE 117-48A
5L ROXIE 854-117 5L SIGNATURE 5615
XXX ROXIE 854 MR

BECKTON ACCENT W180 C2 BECKTON CODY K1 P014
BECKTON CHRISTY R046 CQ

HALFMANN LARKEISA AC E800
BKT LARKEISA U583 NB BECKTON NEBULA L P093
BKT LARKEISA E578 HB

Individual Data	
act. BW	65
SC	42
Frame	M+

CED	BW	WW	ADG	YW	MLK	HPG	CEM	STY	MRB	REA	HB	GM
15	-4.4	70	0.26	112	31	17	6	16	0.59	0.08	85	37
20%	10%	15%	25%	18%	8%	1%	76%	39%	15%	54%	14%	44%

Age of Dam: 3 | Dam Weight: 1055 | dMPPA: 109

Prime Loin earned his name with an incredible 141 IMF ratio, but truth is, he grew in value with each trip across the scale earning ratios of: 93 BW, 104 WW, 108 YW, 110 ADG, 103 REA. Prime Loin is out of one of the rising stars in our herd, whose already earned a 109 MPPA as a 3-yr-old.

13 HALFMANN MERLIN RO H670

01-23-2020 | GKH : H670 | 1A (100%) | #4274465

LJC MERLIN T179 LJC MISSION STATEMENT P27
BUF CRK REDPRIDE N179

WFL MERLIN O18A
WFL COMMITMENT 042Y BROWN COMMITMENT S7206
WFL JEWELMAKER 9024

5L BOURNE 117-48A 5L ADVANTAGE 3267-221Y
5L ROXIE 854-117

HALFMANN ROSE BO F055
HALFMANN ROSE SY B061 BROWN SYNERGY X7838
BECKTON ROSE R114 LN

Individual Data	
act. BW	65
SC	38
Frame	M+

CED	BW	WW	ADG	YW	MLK	HPG	CEM	STY	MRB	REA	HB	GM
16	-4.7	73	0.29	120	33	11	7	14	0.67	0.25	57	70
12%	8%	8%	9%	8%	3%	43%	60%	75%	7%	20%	66%	3%

Age of Dam: 2 | Dam Weight: 1025 | dMPPA: 104

This big scrotal Merlin son delivers tremendous spread from lowest 8% birth weight to heaviest 8% yearling weight.

JIM KOLLMAN
Superior Livestock Representative

PO Box 5961
San Angelo, TX
76902
432-770-5535

www.superiorlivestock.com

We are proud to be an approved supplier of Superior Progressive Genetics! Superior Rep, Jim Kollman, from San Angelo does a great job getting our customers well paid for their investment in superior Red Angus genetics. Watch for Halfmann & Beckton sired calves selling on Superior Livestock Video Auctions.



Lot 14

14 HALFMAN MERLIN CO H731
 02-07-2020 | GKH : H731 | 1A (100%) | #4274455

LJC MERLIN T179 LJC MISSION STATEMENT P27
 BUF CRK REDPRIDE N179

WFL MERLIN 018A
 WFL COMMITMENT 042Y BROWN COMMITMENT S7206
 WFL JEWELMAKER 9024

BECKTON ACCENT C557 N4 BECKTON ACCENT Y312 N3
 BECKTON MINERVA Y654 N

HALFMANN COCA AC E867
 BECKTON COCA C520 S BECKTON SCAMP Z460 L4
 BECKTON COCA P328 EP

Individual Data	
act. BW	65
SC	40
Frame	M

CED	BW	WW	ADG	YW	MLK	HPG	CEM	STY	MRB	REA	HB	GM
15	-4.3	73	0.28	117	33	10	7	14	0.42	0.14	43	35
16%	11%	9%	16%	11%	2%	78%	53%	72%	45%	40%	86%	48%

Age of Dam: 3 | Dam Weight: 1175 | dMPPA: 102

We used Merlin because of his proven feed efficiency, and his tremendous spread from low birth weight to rapid early growth. H731 was 7% lighter than his contemporaries at birth, but 8% heavier at weaning and 7% heavier at yearling.

19 HALFMAN PEERLESS H773
 02-13-2020 | CFH : H773 | 1A (100%) | #4274715

5L BOURNE 670-111C 5L BOURNE 117-48A
 5L ADINA 2174-670

SCHULER SUPREMACY 7177E
 SOR KARVE ENDRANCE 4205B SCHULER ENDURANCE 2101Z
 SOR KARVE PCKR 2625Z

BECKTON NEBULA P P707 BECKTON NEBULA M045
 BECKTON LANA M809 EP

HALFMANN CHIEF NB Y589
 HALFMAN CHIEF W424 OLC CHATEAU L416
 HLFMN B958-B251

Individual Data	
act. BW	68
SC	42
Frame	M-

CED	BW	WW	ADG	YW	MLK	HPG	CEM	STY	MRB	REA	HB	GM
17	-5.8	52	0.25	91	28	14	8	17	0.49	-0.16	68	15
8%	3%	78%	35%	61%	20%	14%	24%	30%	32%	95%	42%	87%

Age of Dam: 9 | Dam Weight: 1050 | dMPPA: 101



Lot 19

If you like turning out sons of cows that have stood the test of time, take a hard look at Halfmann Peerless H773. His 9-year-old dam has maintained a 361 day calving interval with progeny averages of: 96 BW, 102 WW, 101 YW, 119 IMF and 113 REA. Peerless packages his best 8% calving ease and lightest 3% BW EPDs in a big scrotal, wide-based, strong topped package. He was truly without equal for ultrasound earning ratios of 119 IMF and 123 REA.

15 BECKTON HERITAGE H520 S5
 04-04-2020 | BSF : H520 | 1A (100%) | #4377907

BECKTON HERITAGE X403 L3 BECKTON HERITAGE T270 J2
 BECKTON INDIGO H150 LN

BECKTON HERITAGE C477 J4
 BECKTON RUTH Z858 J BECKTON JULIAN U699 L5
 BECKTON RUTH U557 JT

BECKTON SCAMP A627 J4 BECKTON SCAMP X494 E3
 BECKTON SERENA R023 JC

BECKTON LANA C073 S
 BECKTON LANA A083 A BECKTON ACCENT Y260 L3
 BECKTON LANA Y130 N

Individual Data	
act. BW	68
SC	38
Frame	M+

CED	BW	WW	ADG	YW	MLK	HPG	CEM	STY	MRB	REA	HB	GM
17	-4.6	49	0.21	82	30	12	8	16	0.37	0.01	77	35
8%	8%	84%	65%	78%	11%	31%	32%	50%	58%	70%	25%	48%

Age of Dam: 5 | Dam Weight: 935 | dMPPA: 100

An excellent choice to use on virgin heifers, and you'll want to keep all the replacements. H520's EPD profile predicts to improve cow herd profitability by moderating cow size and improving heifer pregnancy, milk and maternal calving ease.

16 BECKTON DOMINOR H019 E10
 02-18-2020 | BKT : H019 | 1A (100%) | #4377555

BECKTON DOMINOR D254 N8 BECKTON DOMINOR A378 W7
 BECKTON INDIGO W772 N

BECKTON DOMINOR F207 A9
 BECKTON LARKABA D014 A BECKTON ACCENT B150 N4
 BECKTON LARKABA B352 A

BECKTON EPIC Z674 E6 BECKTON EPIC U749 D5
 BECKTON INDIGO U504 EP

BECKTON COCA F382 E
 BECKTON COCA B439 E3 BECKTON NEBULA P P707
 BECKTON COCA X517 E

Individual Data	
act. BW	58
SC	31.5
Frame	L-

CED	BW	WW	ADG	YW	MLK	HPG	CEM	STY	MRB	REA	HB	GM
17	-3.8	55	0.25	94	27	11	9	16	0.59	-0.15	62	46
5%	16%	70%	34%	54%	32%	46%	19%	47%	15%	94%	54%	24%

Age of Dam: 2 | Dam Weight: 770 | dMPPA: 98

Born unassisted from a first calf heifer, H019 should make an excellent choice for heifers. He should increase the percentage of calves weaned thanks to this top 5% Calving Ease EPD (CED) and 19% for Maternal Calving Ease (CEM).

20 HALFMAN TOPGUN MI H798
 02-26-2020 | GKH : H798 | 1A (100%) | #4274395

5L ADVANTAGE 3267-221Y BUF CRK THE RIGHT KIND U199
 5L ADINA 195-3267

5L TOPGUN 560-65B
 5L BLACK ADINA 525-560 TC STOCKMAN 365
 5L ADINA 293-525

BECKTON EPIC X464 L5 BECKTON EPIC K6 S569
 BECKTON LANA M393 LN

BECKTON MINERVA C731 E
 BECKTON MINERVA X455 E BECKTON EPIC K6 S569
 BECKTON MINERVA J615 VG

Individual Data	
act. BW	72
SC	37
Frame	M

CED	BW	WW	ADG	YW	MLK	HPG	CEM	STY	MRB	REA	HB	GM
18	-4.5	62	0.26	104	25	19	11	10	0.52	0.22	60	57
2%	9%	39%	26%	32%	48%	1%	3%	96%	25%	24%	58%	10%

Age of Dam: 5 | Dam Weight: 1150 | dMPPA: 96

This Top Gun son has an ideal growth curve: be born without help, get to a heavy pay-weight quickly and don't make cows that eat you out of house and home. He supports that with ratios of: 98 BW, 105 WW, 111 YW, 118 ADG and 110 REA.



Lot 20

17 BECKTON CARDINAL H765 A2
 05-05-2020 | BKT : H765 | 1A (100%) | #4376683

TR DOUBLE EAGLE ZT220 TR RICARDO DOS
 BECKTON LANA U182 JC

BECKTON CARDINAL E673 L
 BECKTON LARKABA A911 L BECKTON LEGEND U331 E2
 BECKTON LARKABA T418 WA

BECKTON ACCENT B643 H3 BECKTON ACCENT Y312 N3
 BKT LARKEISA U535 HS

BECKTON TAMARA D574 A
 BECKTON TAMARA B510 D BECKTON DOMINOR W640 C
 BECKTON TAMARA U358 CT

Individual Data	
act. BW	72
SC	34
Frame	M

CED	BW	WW	ADG	YW	MLK	HPG	CEM	STY	MRB	REA	HB	GM
17	-4.4	60	0.23	97	26	13	8	15	0.48	0.26	64	42
5%	10%	49%	43%	46%	43%	23%	37%	54%	33%	18%	50%	31%

Age of Dam: 4 | Dam Weight: 908 | dMPPA: 101

H765 proves you don't have to sacrifice performance or carcass merit when selecting for calving ease. He earned ratios of 103 WW, 104 YW, 106 ADG, 107 IMF and 110 REA.

18 BECKTON LIKABLE H417 E6
 03-28-2020 | BKT : H417 | 1A (100%) | #4377079

BECKTON LIKABLE Z057 L4 BECKTON LIKABLE X445 J3
 BECKTON MINOLA X107 L

BECKTON LIKABLE F682 S5
 BECKTON LANA C073 S BECKTON SCAMP A627 J4
 BECKTON LANA A083 A

BECKTON EPIC D002 E8 BECKTON EPIC B545 N7
 BECKTON CHRISTY B701 E

BECKTON VERNICE F817 E
 BECKTON VERNICE D777 A BECKTON ACCENT U777 C2
 BECKTON VERNICE L382 LN

Individual Data	
act. BW	57
SC	35
Frame	M

CED	BW	WW	ADG	YW	MLK	HPG	CEM	STY	MRB	REA	HB	GM
17	-4.3	58	0.29	104	28	12	6	15	0.41	0.23	58	53
7%	11%	58%	11%	32%	24%	29%	78%	54%	48%	23%	62%	14%

Age of Dam: 2 | Dam Weight: 815 | dMPPA: 101

Seven of the eight bulls on these two pages rank better than the top 10% of Red Angus for calving ease. This is really an unparalleled selection of calving ease specialists - and they come with added value and cow herd building traits to make them equally useful in the cow herd - after they've outgrown the heifers.

21 HALFMAN MERLIN BE H705
 02-06-2020 | GKH : H705 | 1A (100%) | #4274363

LJC MERLIN T179 LJC MISSION STATEMENT P27
 BUF CRK REDPRIDE N179

WFL MERLIN 018A
 WFL COMMITMENT 042Y BROWN COMMITMENT S7206
 WFL JEWELMAKER 9024

BECKTON EPIC X330 L6 BECKTON EPIC T330 L5
 BECKTON KIT R503 LN

BECKTON BELGA B861 E
 BECKTON BELGA L261 VG BECKTON VEGAS PK F485
 BECKTON BELGA D054 GL

Individual Data	
act. BW	72
SC	39
Frame	M+

CED	BW	WW	ADG	YW	MLK	HPG	CEM	STY	MRB	REA	HB	GM
17	-5.2	71	0.28	116	33	7	7	11	0.38	0.19	21	38
5%	5%	12%	13%	11%	3%	97%	39%	92%	55%	29%	99%	39%

Age of Dam: 6 | Dam Weight: 1260 | dMPPA: 103

Everyone counts on Merlin to deliver improved Feed Efficiency, but we believe foot structure and cow herd longevity will be two of his greatest attributes. His 10-year-old dam and a bunch of 11 and 12-yr-old paternal sisters are still going strong in western Kansas.



Lot 21



22 HALFMAN PROGRAM H771

02-13-2020 | GKH: H771 | 1A (100%) | #4274417

LJC MERLIN T179 LJC MISSION STATEMENT P27
BUF CRK REDPRIDE N179

WFL MERLIN 018A
WFL COMMITMENT 042Y BROWN COMMITMENT S7206
WFL JEWELMAKER 9024

BECKTON JULIAN A086 C6 BECKTON JULIAN X465 J5
BKT PINE MARIE W102 C

HALFMANN COCA JL E703
HALFMANN COCA NB C370 HALFMMN NEBULA MT Z725
BECKTON COCA R675 NB

Individual Data	
act. BW	67
SC	39
Frame	M-

CED	BW	WW	ADG	YW	MLK	HPG	CEM	STY	MRB	REA	HB	GM
17	-5.4	65	0.26	106	34	10	6	15	0.47	-0.01	54	43
7%	4%	30%	27%	28%	2%	62%	64%	59%	35%	75%	70%	29%

Age of Dam: 3 | Dam Weight: 904 | dMPPA: 104

This bull really represents our program: superior calving ease with triple-digit growth, moderate framed, easy fleshing, sound and fertile. Program got it right each trip across the scales, posting ratios of: 96 BW, 109 WW, 108 YW, 106 ADG and 119 IMF.

27 BECKTON ORACLE H807 D2

05-15-2020 | BKT: H807 | 1A (100%) | #4376639

BROWN ORACLE B112 BROWN REVELATION P7021
BROWN MS P707 Y6648

SCHULER ORACLE-7142E
SOR MARLEE SUD IMP 2602Z SCHULER SUDDN IMPACT 0004X
SOR MARLEE CMMTMNT 0470X

BECKTON DOMINOR A378 W7 BECKTON DOMINOR Y005 V6
BECKTON LANA Y541 W

BECKTON ROSE D576 D
BECKTON ROSE W283 J BECKTON JET L P491
BECKTON ROSE P016 LN

Individual Data	
act. BW	72
SC	39
Frame	M

CED	BW	WW	ADG	YW	MLK	HPG	CEM	STY	MRB	REA	HB	GM
17	-2.4	59	0.28	104	25	11	10	18	0.65	0.26	79	57
6%	38%	52%	16%	33%	50%	54%	8%	23%	9%	18%	22%	10%

Age of Dam: 4 | Dam Weight: 1160 | dMPPA: 110

H807 combines best 6% calving ease with triple-digit growth. His dam, D576 is one of the high producing females in the Beckton herd having earned a 110 MPPA as a 4-yr-old.

26 BECKTON CARDINAL H666 S4

04-18-2020 | BKT: H666 | 1A (100%) | #4376805

BECKTON CARDINAL D010 W2 BECKTON CARDINAL B074 N
BECKTON FIREFLY B052 W

BECKTON CARDINAL F175 L3
BECKTON LARKABA B428 L BECKTON LIKABLE U130 L2
BECKTON LARKABA X064 J

BECKTON SCAMP B720 L4 BECKTON SCAMP X458 H3
BECKTON LARKABA Y448 L

BECKTON BELGA F657 S
BECKTON BELGA B422 N BECKTON NEBLA W486 D3
BECKTON BELGA U057 EP

Individual Data	
act. BW	58
SC	34
Frame	M

CED	BW	WW	ADG	YW	MLK	HPG	CEM	STY	MRB	REA	HB	GM
21	-5.2	53	0.25	93	23	11	11	17	0.39	0.06	78	45
1%	5%	75%	34%	58%	73%	54%	2%	30%	53%	59%	24%	26%

Age of Dam: 2 | Dam Weight: 1050 | dMPPA: 96

23 HALFMANN PROFITMAKER AN H663

01-19-2020 | GKH: H663 | 1A (100%) | #4274483

WFL MERLIN 018A LJC MERLIN T179
WFL COMMITMENT 042Y

WFL PROFITMAKER E7030
WFL PROSPECT LSF PROSPECT 2035Z
WFL HOBO 140Z

HALFMANN TAKEOVR SM C214 LSF TAKEOVER 9943W
HALFMANN SANDMN NB Z708

HALFMANN ANKATA TO F186
HALFMANN ANKATA NB C314 HALFMMN NEBULA Z725
HALFMANN ANKATA U393

Individual Data	
act. BW	65
SC	38
Frame	M

CED	BW	WW	ADG	YW	MLK	HPG	CEM	STY	MRB	REA	HB	GM
15	-4.8	67	0.25	107	32	11	7	15	0.61	-0.01	52	45
16%	7%	23%	33%	26%	4%	46%	46%	63%	13%	75%	73%	25%

Age of Dam: 2 | Dam Weight: 1130 | dMPPA: 103

We used ProfitMaker, the \$50,000 Merlin son from ABS on some of our heifers and were very pleased to get bulls like H663. His top 13% marbling EPD is supported by a 140 IMF ratio.

24 HALFMANN MERLIN BA H708

02-06-2020 | GKH: H708 | 1A (100%) | #4274501

LJC MERLIN T179 LJC MISSION STATEMENT P27
BUF CRK REDPRIDE N179

WFL MERLIN 018A
WFL COMMITMENT 042Y BROWN COMMITMENT S7206
WFL JEWELMAKER 9024

BECKTON CHEROKEE N N479 BFCK CHEROKEE CNYN 4912
BECKTON DINAH C440 NM

BECKTON BARMAID U114 CQ
BECKTON BARMAID P323 HR BECKTON HERALD FV J537
BECKTON BARMAID J012 CO

Individual Data	
act. BW	80
SC	39
Frame	M+

CED	BW	WW	ADG	YW	MLK	HPG	CEM	STY	MRB	REA	HB	GM
14	-3.5	68	0.26	110	34	11	4	16	0.47	0.09	65	38
25%	20%	20%	25%	21%	1%	56%	93%	38%	35%	52%	49%	41%

Age of Dam: 12 | Dam Weight: 1065 | dMPPA: 106

If you want cow herds built to last own bulls like lot 24 - when you can find them! His dam and paternal grandam total 22 years of service and average a 107 MPPA.

28 WCRA JULIAN H172

05-12-2020 | WCRA: HC172 | 1B (100%) | #4305905

BECKTON JULIAN X465 J5 BECKTON JULIAN G5 S107
BECKTON SUFFEINA P643 J

BECKTON JULIAN A434 N6
BECKTON LAKME T689 NX BECKTON NEXUS L016
BECKTON LAKME M669 EP

BECKTON SCAMP B720 L4 BECKTON SCAMP X458 H3
BECKTON LARKABA Y448 L

BSF NEBULANN E272 S
BSF NEBULANN Z012 L BECKTON LOKI X833 H4
BSF NEBULANN X393 N

Individual Data	
act. BW	78
SC	39.5
Frame	M+

CED	BW	WW	ADG	YW	MLK	HPG	CEM	STY	MRB	REA	HB	GM
13	-1.1	65	0.28	109	23	10	5	14	0.45	-0.02	34	42
49%	64%	31%	16%	23%	67%	64%	86%	71%	39%	77%	94%	31%

Age of Dam: 3 | Dam Weight: | dMPPA: 97

29 BECKTON ORACLE H168 L2

03-13-2020 | BKT: H168 | 1A (100%) | #4377377

BROWN ORACLE B112 BROWN REVELATION P7021
BROWN MS P707 Y6648

SCHULER ORACLE-7142E
SOR MARLEE SUD IMP 2602Z SCHULER SUDDN IMPACT 0004X
SOR MARLEE CMMTMNT 0470X

BECKTON LIKABLE B154 W4 BECKTON LIKABLE Y124 L3
BECKTON CHRISTY W429 W

BECKTON BELGA D090 L
BECKTON BELGA B422 N BECKTON NEBLA W486 D3
BECKTON BELGA U057 EP

Individual Data	
act. BW	61
SC	39.5
Frame	M

CED	BW	WW	ADG	YW	MLK	HPG	CEM	STY	MRB	REA	HB	GM
20	-5.1	50	0.23	87	18	10	11	19	0.60	0.11	92	63
1%	5%	82%	49%	70%	96%	60%	2%	12%	14%	46%	8%	6%

Age of Dam: 4 | Dam Weight: 1130 | dMPPA: 86



25 BECKTON CARDINAL H745 N2

05-02-2020 | BKT: H745 | 1A (100%) | #4376713

TR DOUBLE EAGLE ZT220 TR RICARDO DOS
BECKTON LANA U182 JC

BECKTON CARDINAL E673 L
BECKTON LARKABA A911 L BECKTON LEGEND U331 E2
BECKTON LARKABA T418 WA

BECKTON NEBULA L P093 BECKTON NEBULA M045
BECKTON MARTA M021 LN

BECKTON LANA W696 N
BECKTON LANA R450 LO BECKTON LOKI C M740
BECKTON LANA M372 WR

Individual Data	
act. BW	59
SC	35
Frame	M

CED	BW	WW	ADG	YW	MLK	HPG	CEM	STY	MRB	REA	HB	GM
19	-5.7	52	0.17	80	24	13	10	19	0.41	0.11	94	20
1%	3%	77%	82%	80%	60%	21%	8%	10%	48%	46%	7%	81%

Age of Dam: 11 | Dam Weight: 1140 | dMPPA: 102

This top 1% Calving Ease specialist comes out of a 11-year-old dam, that has maintained a 369 day calving interval and a 102 MPPA.





30 HALFMANN COMPLETE H684
 02-01-2020 | CFH : H684 | 1A (100%) | #4274639

5L ADVANTAGE 3267-221Y BUF CRK THE RIGHT KIND U199
 5L ADINA 195-3267

5L BOURNE 117-48A
 5L ROXIE 854-117

5L SIGNATURE 5615
 XXX ROXIE 854 MR

HALFMANN NEBULAAL A838 HALFMANN NEBULA AQ Y597
 HALFMANN ALEXIS NB Y602

HALFMANN CHIEF NB C353
 HALFMANN CHIEF NB Y589 BECKTON NEBULA P P707
 HALFMANN CHIEF W424

Individual Data	
act. BW	72
SC	44
Frame	M+

CED	BW	WW	ADG	YW	MLK	HPG	CEM	STY	MRB	REA	HB	GM
14	-5.2	65	0.24	102	31	16	6	15	0.66	0.09	65	43
27%	5%	31%	42%	35%	7%	2%	74%	61%	8%	52%	49%	30%
Age of Dam: 5		Dam Weight: 1153		dMPPA: 102								

This WideBody son of Bourne is the Total Package!. His ideal sized dam has maintained a 361 day calving interval as a 5 year old. We love the thickness, volume and overall fleshing ability of Complete. He captured our attention with each trip through the chute earning ratios of: 98 BW, 107 WW, 110 YW, 114 ADG, 132 IMF and 102 REA.

33 HALFMANN TOPGUN SI H763
 02-10-2020 | CFH : H763 | 1A (100%) | #4274625

5L ADVANTAGE 3267-221Y BUF CRK THE RIGHT KIND U199
 5L ADINA 195-3267

5L TOPGUN 560-65B
 5L BLACK ADINA 525-560

TC STOCKMAN 365
 5L ADINA 293-525

BECKTON HALFMANNHUSTLR R588 BECKTON HUSTLER CN J102
 BECKTON VERNICE F513 CL

HALFMANN SIERRA HU C234
 HALFMANN SIERRA SY A900 BROWN SYNERGY X7838
 HALFMANN SIERRA CH X563

Individual Data	
act. BW	72
SC	41
Frame	M

CED	BW	WW	ADG	YW	MLK	HPG	CEM	STY	MRB	REA	HB	GM
16	-5.1	59	0.29	106	24	19	9	14	0.69	0.19	68	58
11%	5%	53%	10%	29%	61%	1%	19%	73%	6%	29%	43%	9%
Age of Dam: 5		Dam Weight: 1315		dMPPA: 103								

Another bull that should have a 2nd career in the cow herd after he's made a couple of seasons with the heifers. Not only does he combine best 11% calving ease with best 10% ADG, but his 114 ADG and 119 IMF ratio indicates his steers will be fun to feed.

34 HALFMANN BOURNE CH H737
 02-08-2020 | CTH : H737 | 1A (100%) | #4274553

5L ADVANTAGE 3267-221Y BUF CRK THE RIGHT KIND U199
 5L ADINA 195-3267

5L BOURNE 117-48A
 5L ROXIE 854-117

5L SIGNATURE 5615
 XXX ROXIE 854 MR

LSF NIGHT CALVER 9921W MESSMER PACKER S008
 LSF DELLA P4078 U8051

HALFMANN CHIEF NC C231
 HALFMANN CHIEF NB A875 HALFMANN NEBULA AQ Y597
 HALFMANN CHIEF MS Y616

Individual Data	
act. BW	84
SC	38
Frame	M

CED	BW	WW	ADG	YW	MLK	HPG	CEM	STY	MRB	REA	HB	GM
13	-3.9	70	0.24	109	33	19	7	14	0.68	0.16	66	49
37%	15%	15%	37%	22%	3%	1%	55%	74%	6%	35%	45%	19%
Age of Dam: 5		Dam Weight: 1165		dMPPA: 110								



Halfmann Sierra NB X467
 Maternal Grandam of Lot 31

31 HALFMANN BOURNE SI H761
 02-10-2020 | CFH : H761 | 1A (100%) | #4274677

5L ADVANTAGE 3267-221Y BUF CRK THE RIGHT KIND U199
 5L ADINA 195-3267

5L BOURNE 117-48A
 5L ROXIE 854-117

5L SIGNATURE 5615
 XXX ROXIE 854 MR

BIEBER H HUGHES W109 BASIN HOBO 0545
 BASIN ROSE 0670

HALFMANN SIERRA HG E821
 HALFMANN SIERRA NB X467 BECKTON NEBULA P P707
 HALFMANN SIERRA U330

Individual Data	
act. BW	65
SC	37
Frame	M

CED	BW	WW	ADG	YW	MLK	HPG	CEM	STY	MRB	REA	HB	GM
14	-4.5	67	0.23	104	28	17	7	16	0.58	-0.02	86	35
25%	9%	23%	48%	33%	20%	2%	43%	42%	16%	77%	13%	47%
Age of Dam: 3		Dam Weight: 1115		dMPPA: 103								

Few things impact cow/calf profitability like shorter calving intervals. Earlier calves are heavier calves, and those cows have longer to get healed up for re-breeding. H761's dam has a 358 calving interval over her first two calves.

35 HALFMANN BOURNE BA H751
 02-09-2020 | CTH : H751 | 1A (100%) | #4274577

5L ADVANTAGE 3267-221Y BUF CRK THE RIGHT KIND U199
 5L ADINA 195-3267

5L BOURNE 117-48A
 5L ROXIE 854-117

5L SIGNATURE 5615
 XXX ROXIE 854 MR

BECKTON ACCENT W180 C2 BECKTON CODY K1 P014
 BECKTON CHRISTY R046 CQ

HALFMANN BARMAID AC E764
 HALFMANN BARMAID SY B128 BROWN SYNERGY X7838
 BECKTON BARMAID W382 H

Individual Data	
act. BW	73
SC	39
Frame	M

CED	BW	WW	ADG	YW	MLK	HPG	CEM	STY	MRB	REA	HB	GM
15	-4.7	67	0.23	103	30	17	6	16	0.61	-0.02	79	36
17%	8%	23%	49%	34%	11%	2%	74%	48%	13%	77%	22%	44%
Age of Dam: 3		Dam Weight: 1075		dMPPA: 105								

ROBERTSON LIVESTOCK

Donnie Robertson
 Certified Ultrasound Technician
 Registered, Commercial & Feedlot
 4661 PR 4055 • Normangee, TX 77871
 Cell: 936.581.1844 • Email: crober86@aol.com

Red Angus EPDs have utilized Ultrasound data for over 20 years to identify variation in marbling, ribeye area and backfat. At Halfmann Red Angus we continue to invest in Robertson Livestock for the collection of this important data so that our customers can make the best informed bull selection decisions.



Lot 32

32 HALFMANN ORACLE BA H775
 02-13-2020 | GKH : H775 | 1A (100%) | #4274419

BROWN REVELATION P7021 BFCK CHEROKEE CNYN 4912
 BROWN MS VICILA M7799

BROWN ORACLE B112
 BROWN MS P707 Y6648

BECKTON NEBULA P P707
 BROWN MS JULIAN W6579

BECKTON ACCENT Y312 N3 BECKTON ACCENT U777 C2
 BKT LARKEISA S055 NB

HALFMANN BARMAID AC E707
 HALFMANN BARMAID SY C223 BROWN SYNERGY X7838
 HALFMANN BARMAID A884

Individual Data	
act. BW	68
SC	38
Frame	M-

CED	BW	WW	ADG	YW	MLK	HPG	CEM	STY	MRB	REA	HB	GM
16	-4.1	68	0.26	109	23	11	7	14	0.64	0.39	53	58
12%	13%	19%	28%	22%	72%	45%	51%	69%	10%	7%	72%	9%
Age of Dam: 3		Dam Weight: 1050		dMPPA: 98								

This Oracle son is moderate, deep, thick and good. His 16 CED to 109 spread means he'll work on cows after he outgrows heifers. His Top 9% GridMaster index and top 10% ranks for marbling and ribeye could win you a GridMaster Award.

36 HALFMANN MERLIN CH H650
 01-13-2020 | CTH : H650 | 1A (100%) | #4274591

LJC MERLIN T179 LJC MISSION STATEMENT P27
 BUF CRK REDPRIDE N179

WFL MERLIN 018A
 WFL COMMITMENT 042Y

BROWN COMMITMENT S7206
 WFL JEWELMAKER 9024

BECKTON ACCENT Y312 N3 BECKTON ACCENT U777 C2
 BKT LARKEISA S055 NB

HALFMANN CHIEF AC F092
 HALFMANN CHIEF NE C257 BECKTON NEW ERA Y194
 HALFMANN CHIEF WR Y591

Individual Data	
act. BW	54
SC	41
Frame	M

CED	BW	WW	ADG	YW	MLK	HPG	CEM	STY	MRB	REA	HB	GM
19	-7.2	58	0.19	89	34	7	8	12	0.31	0.23	34	26
1%	1%	56%	74%	66%	2%	96%	33%	85%	73%	23%	94%	68%
Age of Dam: 2		Dam Weight: 902		dMPPA: 101								

This bull maybe a little "greener" than his contemporaries - but he's already got one breeding season under his belt. Due to his best 1% Calving Ease EPD we used him natural service on our heifers.



Lot 36



37 **HALFMANN MERLIN LA H681**
 01-31-2020 | GKH : H681 | 1A (100%) | #4274311

LJC MERLIN T179 LJC MISSION STATEMENT P27
 BUF CRK REDPRIDE N179

WFL MERLIN 018A
 WFL COMMITMENT 042Y BROWN COMMITMENT S7206
 WFL JEWELMAKER 9024

BECKTON CHEROKEE Y129 E4 BECKTON CHERKEE T450 L3
 BECKTON LANAM809 EP

BECKTON LANA A097 C
 BECKTON LANA Y354 E BECKTON EPIC T330 L5
 BECKTON LANA E136 TP

Individual Data	
act. BW	68
SC	42
Frame	M+

CED	BW	WW	ADG	YW	MLK	HPG	CEM	STY	MRB	REA	HB	GM
17	-5.5	58	0.25	98	37	8	8	12	0.38	0.00	39	43
6%	4%	56%	31%	44%	1%	92%	37%	85%	55%	72%	91%	30%

Age of Dam: 7 | Dam Weight: 1080 | dMPPA: 104

This big scrotal Merlin son's dam has passed her 6 year Stayability test with flying colors, maintaining a 104 MPPA as a 7-yr-old.



38 **HALFMANN MERLIN SI H693**
 02-03-2020 | CFH : H693 | 1A (100%) | #4274719

LJC MERLIN T179 LJC MISSION STATEMENT P27
 BUF CRK REDPRIDE N179

WFL MERLIN 018A
 WFL COMMITMENT 042Y BROWN COMMITMENT S7206
 WFL JEWELMAKER 9024

BECKTON NEBULA P P707 BECKTON NEBULA M045
 BECKTON LANAM809 EP

HALFMANN SIERRA NB X467
 HALFMANN SIERRA U330 BECKT HALFMNHNHUSTLR R588
 OLC SIERRA R417

Individual Data	
act. BW	70
SC	37
Frame	M+

CED	BW	WW	ADG	YW	MLK	HPG	CEM	STY	MRB	REA	HB	GM
15	-4.6	60	0.25	100	31	8	7	20	0.49	-0.12	82	30
16%	8%	48%	34%	41%	7%	95%	46%	4%	32%	92%	18%	59%

Age of Dam: 10 | Dam Weight: ET | dMPPA: 100

Merlin has earned a reputation of breeding leading foot structure, feed efficiency and docility. Now couple that with the soundness, fertility and longevity of his amazing 10-yr-old dam, X467 (see photo on page 16) and you have a real cow maker. H693 is in the running for the deepest ribbed, longest bodied bull in the entire offering.



39 **BSF ACCENT H841 J5**
 05-26-2020 | BSF : H841 | 1A (99.70%) | #4377641

BECKTON ACCENT Y260 L3 BECKTON ACCENT W180 C2
 BECKTON LANA W463 L

BECKTON ACCENT D326 N4
 BECKTON LYDIA S069 NB BECKTON NEBULA P P707
 BECKTON LYDIA P583 WR

BECKTON JET L P491 TR JULIAN LT151
 BECKTON MINERVA L278 LN

BSF JULIANNE E555 J
 BSF JULIANNE B272 N BECKTON NEBULA W486 D3
 BSF JULIANNE U532 WR

Individual Data	
act. BW	70
SC	37.5
Frame	M

CED	BW	WW	ADG	YW	MLK	HPG	CEM	STY	MRB	REA	HB	GM
14	-2.7	58	0.21	92	26	12	6	19	0.47	-0.13	80	21
28%	32%	56%	60%	59%	43%	37%	78%	7%	35%	92%	21%	77%

Age of Dam: 3 | Dam Weight: 1345 | dMPPA: 105

This Accent son has been ahead of his contemporaries ever since he weaned 14% heavier than the average of his group. His dam is a highly productive young cow already earning a 105 MPPA as a 3-yr-old.

41 **BECKTON DOMINOR H777 N9**
 05-09-2020 | BKT : H777 | 1A (100%) | #4376671

BECKTON DOMINOR A378 W7 BECKTON DOMINOR Y005 V6
 BECKTON LANA Y541 W

BECKTON DOMINOR D254 N8
 BECKTON INDIGO W772 N BECKTON NEBULA T398 V3
 BECKTON INDIGO T613 JT

BECKTON NEBULA X267 J3 BECKTON NEBULA T269 E2
 BECKTON INDIGO T613 JT

BECKTON TARA Z160 N
 BECKTON TARA W011 N BECKTON NEBULA T054 H3
 BECKTON TARA T227 JC

Individual Data	
act. BW	71
SC	38
Frame	M+

CED	BW	WW	ADG	YW	MLK	HPG	CEM	STY	MRB	REA	HB	GM
18	-4.7	45	0.19	76	33	13	9	18	0.38	0.06	73	31
3%	8%	91%	72%	85%	3%	26%	12%	21%	55%	59%	33%	58%

Age of Dam: 8 | Dam Weight: 1025 | dMPPA: 108

If you raise your own replacements, longevity and productivity are key to your profitability. The dam of Lot 41 has maintained a 108 MPPA as an 8-yr-old, and more than kept up with the younger models.

42 **BECKTON EPIC H738 A8**
 05-01-2020 | BSF : H738 | 1A (100%) | #4377733

BECKTON EPIC B483 N6 BECKTON EPIC U749 D5
 BKT PINE MARIE X339 N

BECKTON EPIC D001 L7
 BECKTON MONA B713 L BECKTON LEGEND U331 E2
 BECKTON MONA U564 JT

BECKTON ACCENT A175 O3 BECKTON ACCENT W180 C2
 BECKTON LANA R214 RA

BECKTON MINERVA E666 A
 BECKTON MINERVA A470 N BECKTON NEBULA Y036 N4
 BECKTON MINERVA Y520 J

Individual Data	
act. BW	77
SC	37
Frame	M

CED	BW	WW	ADG	YW	MLK	HPG	CEM	STY	MRB	REA	HB	GM
13	-1.2	60	0.27	104	27	10	6	16	0.37	0.14	55	42
42%	62%	48%	18%	32%	28%	66%	76%	45%	58%	40%	69%	31%

Age of Dam: 3 | Dam Weight: 1080 | dMPPA: 106

40 **BECKTON ACCENT H755 A5**
 05-04-2020 | BKT : H755 | 1A (100%) | #4376695

BECKTON ACCENT Y312 N3 BECKTON ACCENT U777 C2
 BKT LARKEISA S055 NB

BECKTON ACCENT C557 N4
 BECKTON MINERVA Y654 N BECKTON NEBULA T398 V3
 BECKTON MINERVA M369 LO

BECKTON ACCENT U777 C2 BECKTON CODY K1 P014
 BECKTON SUSAN R022 CQ

BECKTON SUFFEINA D277 A
 BECKTON SUFFEINA Y273 N BECKTON NEBULA W778 J4
 BECKTON SUFFEINA W489 W

Individual Data	
act. BW	58
SC	34
Frame	M

CED	BW	WW	ADG	YW	MLK	HPG	CEM	STY	MRB	REA	HB	GM
20	-6.9	50	0.21	83	28	14	10	16	0.57	-0.19	73	47
1%	1%	83%	62%	76%	22%	9%	7%	39%	17%	97%	33%	23%

Age of Dam: 4 | Dam Weight: 1070 | dMPPA: 106

In addition to best 1% Calving Ease, H755 dominated his contemporary group when he scanned a 135 IMF ratio, which helped earn his Top 17% Marbling EPD.





43 BSF ACCENT H424 C4
03-28-2020 | BSF : H424 | 1B (99.80%) | #4377995

BECKTON ACCENT W180 C2 BECKTON CODY K1 P014
BECKTON CHRISTY R046 CQ

BECKTON ACCENT E172 L3
BECKTON INDIGO Y406 L BECKTON LIKABLE U130 L2
BECKTON INDIGO R745 WR

BECKTON CHEROKEE N N479 BFCK CHEROKEE CNYN 4912
BECKTON DINAH C440 NM

BSF LAUREL U202 CQ
BSF LAUREL N839 LN BECKTON LANCER T1 H080
BSF REGUS E601

Individual Data	
act. BW	61
SC	35.5
Frame	M

CED	BW	WW	ADG	YW	MLK	HPG	CEM	STY	MRB	REA	HB	GM
17	-5.2	39	0.14	61	24	13	7	19	0.27	-0.08	87	17
6%	5%	96%	93%	96%	60%	23%	46%	7%	83%	87%	13%	85%

Age of Dam: 12 | Dam Weight: 1000 | dMPPA: 97

47 HALFMAN CHROME LA H854
03-30-2020 | GKH : H854 | 1A (100%) | #4274387

HALFMANN TAKEOVR SM C214 SF TAKEOVER 9943W
HALFMANN SANDMAN NB Z708

HALFMANN CHROME E818
HALFMANN SIERRA NC C260 LSF NIGHT CALVER 9921W
HALFMANN SIERRA SY A857

HALFMANN NEBULA MT Z725 BECKTON NEBULA P P707
HALFMANN MATTIE T336

HALFMANN LANA NB C338
BECKTON LANA S341 JT BECKTON JET L P491
BECKTON LANA P656 JL

Individual Data	
act. BW	77
SC	38
Frame	M

CED	BW	WW	ADG	YW	MLK	HPG	CEM	STY	MRB	REA	HB	GM
16	-4.4	55	0.27	99	28	13	8	17	0.39	0.06	56	38
12%	10%	67%	17%	42%	20%	22%	22%	35%	53%	59%	67%	41%

Age of Dam: 5 | Dam Weight: 1315 | dMPPA: 101

48 HALFMAN CHROME CH H847
03-26-2020 | GKH : H847 | 1A (100%) | #4274319

HALFMANN TAKEOVR SM C214 SF TAKEOVER 9943W
HALFMANN SANDMAN NB Z708

HALFMANN CHROME E818
HALFMANN SIERRA NC C260 LSF NIGHT CALVER 9921W
HALFMANN SIERRA SY A857

MUSHRUSH IMPRSSIVE CA U236 BUF CRK LANCER R017
MUSHRUSH MADAM LT R265

HALFMANN CHIGAPRIDE IM A814
HALFMANN CHIGAPRIDE M609 HALFMANN MARATHN M314
HALFMANN TUSGAPRDE C306

Individual Data	
act. BW	72
SC	37
Frame	M+

CED	BW	WW	ADG	YW	MLK	HPG	CEM	STY	MRB	REA	HB	GM
18	-6.1	55	0.26	97	31	12	10	14	0.31	0.31	47	27
2%	2%	69%	22%	47%	8%	29%	8%	67%	73%	13%	82%	66%

Age of Dam: 7 | Dam Weight: 1330 | dMPPA: 105



44 HALFMAN SUPREMACY CH H659
01-19-2020 | CTH : H659 | 1A (100%) | #4274581

5L BOURNE 670-111C 5L BOURNE 117-48A
5L ADINA 2174-670

SCHULER SUPREMACY 7177E
SOR KARVE ENDRANCE 4205B SCHULER ENDURANCE 2101Z
SOR KARVE PCKR 2625Z

5L DEFENDER 560-30Z 5L ADVOCATE 817-14W
5L BLACK ADINA 525-560

HALFMANN CHIEF DF F029
HALFMANN CHIEF GN D623 HALFMANN GENESIS A831
HALFMANN CHIEF WR Y591

Individual Data	
act. BW	68
SC	40
Frame	M+

CED	BW	WW	ADG	YW	MLK	HPG	CEM	STY	MRB	REA	HB	GM
17	-4.1	59	0.25	100	26	20	8	13	0.27	0.05	60	21
5%	13%	52%	28%	40%	39%	1%	37%	81%	83%	61%	59%	78%

Age of Dam: 2 | Dam Weight: 1080 | dMPPA: 97

49 HALFMAN MERLIN CC H672
01-25-2020 | GKH : H672 | 1A (100%) | #4274461

LJC MERLIN T179 LJC MISSION STATEMENT P27
BUF CRK REDPRIDE N179

WFL MERLIN O18A
WFL COMMITMENT 042Y BROWN COMMITMENT S7206
WFL JEWELMAKER 9024

BROWN SYNERGY X7838 BECKTON NEBULA P P707
CBAR BROWN ABIGRCE T714

HALFMANN CHOCTAW SY F031
HALFMANN CHOCTAW 4430 D487 OK DOUBLE CHIEF 4430
HALFMANN CHOCTAW CHIEF C304

Individual Data	
act. BW	82
SC	41
Frame	L-

CED	BW	WW	ADG	YW	MLK	HPG	CEM	STY	MRB	REA	HB	GM
12	-2	71	0.26	113	35	9	6	16	0.50	0.13	60	40
58%	46%	14%	22%	16%	1%	82%	72%	50%	29%	42%	59%	36%

Age of Dam: 2 | Dam Weight: 964 | dMPPA: 107

10 YEARS MULTIMIN 90 Don't Compromise Herd Health
— Inject MULTIMIN® 90

MULTIMIN® 90 is an injectable supplement that quickly boosts essential trace mineral levels with no antagonist interference in calves, heifers, cows, and bulls.

Heath Landis
(713) 376-9223 • heathlandis@rocketmail.com

www.multiminusa.com • 866.269.6467 • 970.372.2302
Copyright © 2020. Multimin USA. All Rights Reserved.

45 HALFMAN BOURNE SI H756
02-10-2020 | CFH : H756 | 1A (100%) | #4274607

5L ADVANTAGE 3267-221Y BUF CRK THE RIGHT KIND U199
5L ADINA 195-3267

5L BOURNE 117-48A
5L ROXIE 854-117 5L SIGNATURE 5615
XXX ROXIE 854 MR

BROWN SYNERGY X7838 BECKTON NEBULA P P707
C-BAR & BROWN ABIGRACE

HALFMANN SIERRA SY A900
HALFMANN SIERRA CH X563 HALFMANN CHATEAU L610
OLC SIERRA R417

Individual Data	
act. BW	69
SC	44
Frame	M+

CED	BW	WW	ADG	YW	MLK	HPG	CEM	STY	MRB	REA	HB	GM
14	-4.2	65	0.24	104	34	16	7	13	0.56	0.06	55	29
36%	12%	28%	39%	32%	1%	3%	60%	78%	19%	59%	68%	61%

Age of Dam: 7 | Dam Weight: 1200 | dMPPA: 110

46 HALFMAN BOURNE RO H750
02-09-2020 | CFH : H750 | 1A (100%) | #4274667

5L ADVANTAGE 3267-221Y BUF CRK THE RIGHT KIND U199
5L ADINA 195-3267

5L BOURNE 117-48A
5L ROXIE 854-117 5L SIGNATURE 5615
XXX ROXIE 854 MR

BECKTON ACCENT Y260 L3 BECKTON ACCENT W180 C2
BECKTON LANA W463 L

HALFMANN ROBIN AC E757
HALFMANN ROBIN SY A832 BROWN SYNERGY X7838
HALFMANN ROBIN I551

Individual Data	
act. BW	69
SC	37
Frame	M

CED	BW	WW	ADG	YW	MLK	HPG	CEM	STY	MRB	REA	HB	GM
15	-4.4	62	0.21	96	30	17	6	18	0.66	0.00	85	38
21%	10%	41%	61%	50%	10%	2%	74%	19%	8%	72%	14%	40%

Age of Dam: 3 | Dam Weight: 1210 | dMPPA: 98

50 HALFMAN SYNERGY IN H669
01-22-2020 | GKH : H669 | 1A (100%) | #4274525

BECKTON NEBULA P P707 BECKTON NEBULA M045
BECKTON LANA M809 EP

BROWN SYNERGY X7838
C-BAR & BRWN ABIGRCE T714 LJC MISSION STATEMENT P27
BROWN MS ABIGRACE L7730

BECKTON NEBULA W065 C3 BECKTON NEBULA T269 E2
BECKTON LANAT104 CT

BECKTON INDIGO Y026 N
BECKTON INDIGO W866 A BECKTON CODY K1 P014
BECKTON INDIGO D780 JL

Individual Data	
act. BW	60
SC	42
Frame	M-

CED	BW	WW	ADG	YW	MLK	HPG	CEM	STY	MRB	REA	HB	GM
19	-5.5	54	0.25	95	34	12	10	15	0.49	-0.13	55	30
2%	4%	71%	29%	53%	2%	34%	6%	64%	32%	92%	69%	60%

Age of Dam: 9 | Dam Weight: 1365 | dMPPA: 107



This Bourne son has an ideal growth curve with ratios of: 93 BW, 112 WW, 116 YW and 121 ADG. His dam maintains a 361 day calving interval and a 110 MPPA as a 7 year old.

H750's best 8% Marbling was earned the old fashioned way - with a 111 IMF ratio.

If you like them moderate framed, deep bodied and wide based, you're going to love this Synergy son. Check the age and MPPA on this bull's dam - she's as steady as they come.

51 **HALFMANN MERLIN IN H654**
 01-18-2020 | CFH: H654 | 1A (100%) | #4274687

LJC MERLIN T179 LJC MISSION STATEMENT P27
 BUF CRK REDPRIDE N179

WFL MERLIN 018A
 WFL COMMITMENT 042Y BROWN COMMITMENT S7206
 WFL JEWELMAKER 9024

RHF-RHR 190A TENX 49D REDHILL TEN X 104U 190A
 REDHILL 151Y AMBER 134B

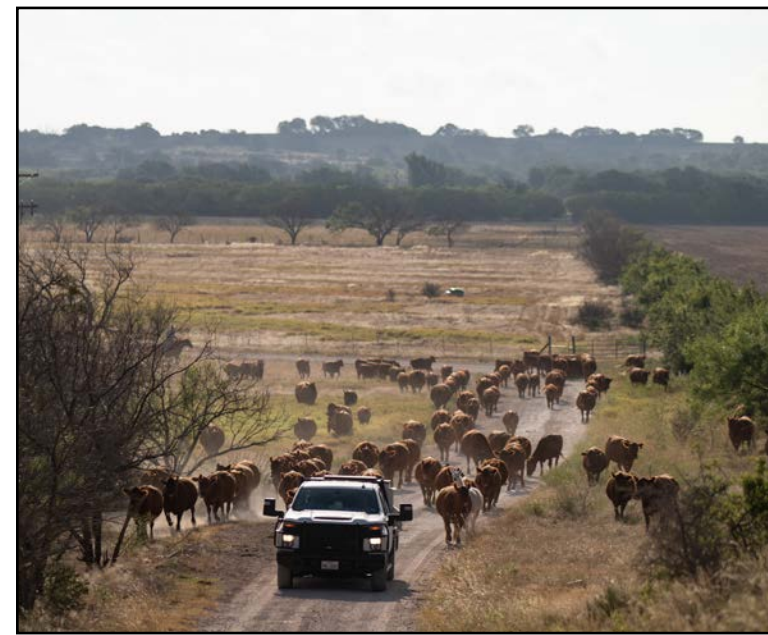
HALFMANN INDIGO TX F078
 BECKTON INDIGO U004 NB BECKTON NEBULA G S237
 BECKTON INDIGO S354 JT

act. BW	53
SC	40
Frame	M

CED	BW	WW	ADG	YW	MLK	HPG	CEM	STY	MRB	REA	HB	GM
18	-6.2	64	0.22	99	33	9	8	12	0.65	0.20	50	50
3%	2%	33%	57%	44%	3%	79%	22%	87%	9%	28%	77%	18%

Age of Dam: 2 | Dam Weight: 942 | dMPPA: 102

This best 3% Calving Ease son of Feed Efficiency specialist, Merlin also excels for quality grade. His top 9% Marbling EPD is driven by an amazing 145 IMF ratio.



52 **HALFMANN MERLIN SF H723**
 02-07-2020 | GKH: H723 | 1A (100%) | #4274441

LJC MERLIN T179 LJC MISSION STATEMENT P27
 BUF CRK REDPRIDE N179

WFL MERLIN 018A
 WFL COMMITMENT 042Y BROWN COMMITMENT S7206
 WFL JEWELMAKER 9024

BECKTON ACCENT Y260 L3 BECKTON ACCENT W180 C2
 BECKTON LANA W463 L

HALFMANN SUFFEINA AC E786
 BKT SUFFEINA T500 EP BECKTON EPIC K3 M606
 BECKTON SUFFEINA N844 LN

act. BW	68
SC	38
Frame	M+

CED	BW	WW	ADG	YW	MLK	HPG	CEM	STY	MRB	REA	HB	GM
16	-4.9	55	0.22	90	31	6	6	16	0.43	0.00	59	36
10%	7%	69%	54%	64%	6%	98%	62%	38%	43%	72%	60%	45%

Age of Dam: 3 | Dam Weight: 1005 | dMPPA: 99

One of the best ways to add value to a calf crop is by increasing uniformity. Put together some of these Merlin sons and turn out a set of half-brothers.

53 **HALFMANN BOURNE MA H780**
 02-14-2020 | CTH: H780 | 1A (100%) | #4274567

5L ADVANTAGE 3267-221Y BUF CRK THE RIGHT KIND U199
 5LADINA 195-3267

5L BOURNE 117-48A
 5L ROXIE 854-117 5L SIGNATURE 5615
 XXX ROXIE 854 MR

HALFMANN NEBULAAL B048 BECKTON NEBULA P P707
 HALFMANN ALEXIS MS X491

HALFMANN MARTA NB D572
 HALFMANN MARTA SY B097 BROWN SYNERGY X7838
 BECKTON MARTA U079 NB

act. BW	75
SC	43
Frame	M

CED	BW	WW	ADG	YW	MLK	HPG	CEM	STY	MRB	REA	HB	GM
14	-4.4	62	0.22	98	31	16	6	12	0.65	0.04	58	43
27%	10%	41%	50%	45%	6%	3%	68%	85%	9%	63%	62%	29%

Age of Dam: 4 | Dam Weight: 962 | dMPPA: 104

54 **BECKTON HUGHES H880 L3**
 06-17-2020 | BKT: H880 | 2 (100%) | #4376571

BIEBER H HUGHES W109 BASIN HOBO 0545
 BASIN ROSE 06T0

BECKTON HUGHES C463 N2
 BECKTON LAKME T689 NX BECKTON NEXUS L016
 BECKTON LAKME M669 EP

BECKTON LIKABLE U120 L2 BECKTON LIKABLE S633
 BECKTON LANA S718 LN

BECKTON MONA A918 L
 BECKTON MONA W093 N BECKTON NEBULA T398 V3
 BECKTON MONA T809 NB

act. BW	80
SC	37.5
Frame	M-

CED	BW	WW	ADG	YW	MLK	HPG	CEM	STY	MRB	REA	HB	GM
16	-3.6	57	0.17	84	27	11	9	19	0.33	0.02	94	9
13%	18%	60%	84%	74%	29%	48%	19%	8%	68%	68%	7%	93%

Age of Dam: 7 | Dam Weight: 960 | dMPPA: 100

Long bodied and strong topped, H880 is one of the most attractive bulls in the sale, and a great choice if you raise your own replacements. Check out his single-digit ranks for Stayability and HerdBuilder.

55 **BECKTON ACCENT H773 E4**
 05-08-2020 | BSF: H773 | 1A (100%) | #4377709

BECKTON ACCENT W180 C2 BECKTON CODY K1 P014
 BECKTON CHRISTY R046 CQ

BECKTON ACCENT D115 N3
 BECKTON LARKABA W272 N BECKTON NEBULA EN S347
 BECKTON LARKABA N643 HR

BECKTON EMCEE W526 J2 BECKTON EMCEE S466
 BECKTON LARKABA P645 JL

BECKTON LARKABA Z603 E
 BECKTON LARKABA U274 JL BECKTON JULIAN G3 P608
 BECKTON LARKABA N708 HR

act. BW	61
SC	38
Frame	M

CED	BW	WW	ADG	YW	MLK	HPG	CEM	STY	MRB	REA	HB	GM
19	-6.3	47	0.15	71	30	12	7	17	0.38	-0.12	68	20
1%	2%	87%	91%	90%	10%	31%	57%	32%	55%	92%	42%	80%

Age of Dam: 8 | Dam Weight: 1050 | dMPPA: 105

57 **BECKTON ORACLE H801 N2**
 05-14-2020 | BKT: H801 | 1A (100%) | #4376645

BROWN ORACLE B112 BROWN REVELATION P7021
 BROWN MS P707 Y6648

SCHULER ORACLE-7142E
 SOR MARLEE SUD IMP 2602Z SCHULER SUDDEN IMPACT 0004X
 SOR MARLEE CMMTMNT 0470X

BECKTON NEBULA T398 V3 BECKTON NEBULA L P093
 BECKTON MINERVA J615 VG

BKT PINE MARIE X688 N
 BKT PINE MARIE T593 HT BECKTON HERITAGE N013
 BKT PINE MARIE P143 LN

act. BW	63
SC	40
Frame	M

CED	BW	WW	ADG	YW	MLK	HPG	CEM	STY	MRB	REA	HB	GM
19	-6.1	53	0.21	86	25	10	11	20	0.60	0.12	100	48
1%	2%	76%	64%	72%	51%	78%	2%	4%	14%	44%	4%	21%

Age of Dam: 10 | Dam Weight: 1000 | dMPPA: 102

No surprise H801 ranks so high for Stayability and HerdBuilder, his dam still produces above herd average as a 10-yr-old.

59 **HALFMANN PROFITMAKER TA H728**
 02-07-2020 | GKH: H728 | 1A (100%) | #4274499

WFL MERLIN 018A LJC MERLIN T179
 WFL COMMITMENT 042Y

WFL PROFITMAKER E7030
 WFL PROSPECT LSF PROSPECT 2035Z
 WFL HOBO 140Z

BECKTON LOKI CL S284 BECKTON LOKI C M740
 BECKTON LAKME J460 LT

BECKTON TAMARA U011 LO
 BECKTON TAMARA S314 HU BECKTON HUSTLER C2 L079
 BECKTON TAMARA M823 LN

act. BW	65
SC	34
Frame	M+

CED	BW	WW	ADG	YW	MLK	HPG	CEM	STY	MRB	REA	HB	GM
20	-6.6	58	0.22	93	33	8	10	15	0.39	-0.05	53	32
1%	1%	58%	56%	57%	2%	93%	8%	63%	53%	82%	72%	55%

Age of Dam: 12 | Dam Weight: 1205 | dMPPA: 106

This bull's dam has stood the test of time, maintaining a 106 MPPA as 12-yr-old. She had her first calf on March 7, 2010; 10 years later she calved a month earlier with Lot 59.

56 **BECKTON LIKABLE H856 N4**
 06-02-2020 | BKT: H856 | 1A (100%) | #4376595

BECKTON LIKABLE U130 L2 BECKTON LIKABLE S633
 BECKTON KIT S478 LN

BECKTON LIKABLE C229 R3
 BECKTON TAMARA X447 J BECKTON ROMAN J S158
 BECKTON TAMARA R834 JC

BECKTON NEBULA X096 N4 BECKTON NEBULA U206 V3
 BECKTON TAMARA U185 NB

BECKTON COCA C764 N
 BECKTON COCA Y579 H BECKTON HASTEN U108 J3
 BECKTON COCA T080 NB

act. BW	84
SC	36
Frame	M

CED	BW	WW	ADG	YW	MLK	HPG	CEM	STY	MRB	REA	HB	GM
13	-1.8	58	0.22	94	27	10	5	18	0.42	0.05	72	19
45%	49%	57%	52%	55%	35%	62%	87%	17%	45%	61%	34%	82%

Age of Dam: 5 | Dam Weight: 1130 | dMPPA: 103

58 **HALFMANN PROFITMAKER FR H777**
 02-14-2020 | GKH: H777 | 1A (100%) | #4274333

WFL MERLIN 018A LJC MERLIN T179
 WFL COMMITMENT 042Y

WFL PROFITMAKER E7030
 WFL PROSPECT LSF PROSPECT 2035Z
 WFL HOBO 140Z

BECKTON SCAMP X494 E3 BECKTON SCAMP T A825
 BECKTON LANA S074 EP

HALFMANN FREYJA SC A905
 BECKTON FREYJA X316 H BECKTON HASTEN U108 J3
 BECKTON FREYJA U464 JC

act. BW	88
SC	41
Frame	M+

CED	BW	WW	ADG	YW	MLK	HPG	CEM	STY	MRB	REA	HB	GM
15	-3.4	66	0.25	106	33	13	6	17	0.37	0.01	80	32
23%	21%	25%	31%	27%	3%	19%	62%	32%	58%	70%	21%	55%

Age of Dam: 7 | Dam Weight: 1025 | dMPPA: 102

This son of ABS calving ease specialist, ProfitMaker finished way ahead of his herd mates with ratios of 121 ADG and 112 IMF.

60 **HALFMANN DOMAIN DI H772**
 02-13-2020 | GKH: H772 | 1A (100%) | #4274527

BECKTON DOMINOR T122 Z1 BECKTON DOMINOR Z1 R610
 BKT LARKABEL R038 WA

3SCC DOMAIN A163
 3SCC EUCLA X723 BASIN HOBO 0545
 BSKF EUCLA U278

BECKTON WARRIOR U636 J5 BECKTON WARRIOR N645 T1
 BECKTON LYDIA H159 JL

BECKTON DINAH Y170 W
 BECKTON DINAH K287 HU BECKTON HUSTLER C G407
 BECKTON DINAH G334 CT

act. BW	84
SC	38
Frame	M

CED	BW	WW	ADG	YW	MLK	HPG	CEM	STY	MRB	REA	HB	GM
12	-2.8	69	0.25	109	23	14	4	16	0.49	-0.07	55	25
60%	31%	16%	32%	22%	66%	9%	96%	51%	32%	85%	68%	71%

Age of Dam: 9 | Dam Weight: 1165 | dMPPA: 108



61 HALFMAN ORACLE MI H734
 02-08-2020 | CTH: H734 | 1A (100%) | #4274543

BROWN REVELATION P7021 BFCK CHEROKEE CNYN 4912
 BROWN MS VICIA M7799

BROWN ORACLE B112
 BROWN MS P707 Y6648 BECKTON NEBULA P P707
 BROWN MS JULIAN W6579

BECKTON NEBULA P P707 BECKTON NEBULA M045
 BECKTON LANA M809 EP

HALFMANN MAIATA NB B047
 BECKTON MAIATA U489 HT BECKTON HERITAGE N013
 BKT MAIATA K503 EP

Individual Data												
act. BW	96											
SC	37											
Frame	M+											

CED	BW	WW	ADG	YW	MLK	HPG	CEM	STY	MRB	REA	HB	GM
11	-0.9	67	0.23	104	18	9	5	18	0.66	0.17	69	60
74%	67%	24%	43%	32%	96%	83%	86%	22%	8%	33%	40%	8%

Age of Dam: 6 | Dam Weight: 1180 | dMPPA: 98

65 HALFMAN TOPGUN SM H767
 02-12-2020 | GKH: H767 | 1A (100%) | #4274533

5L ADVANTAGE 3267-221Y BUF CRK THE RIGHT KIND U199
 5L ADINA 195-3267

5L TOPGUN 560-65B
 5L BLACK ADINA 525-560 TC STOCKMAN 365
 5L ADINA 293-525

BECKTON NEBULA P P707 BECKTON NEBULA M045
 BECKTON LANA M809 EP

HALFMANN SANDMAN NB Z690
 HALFMANN SHRAPNEL J228 HALFMANN SHRAPNEL J801
 HLFMNN SANDMAN D402

Individual Data												
act. BW	84											
SC	43											
Frame	M+											

CED	BW	WW	ADG	YW	MLK	HPG	CEM	STY	MRB	REA	HB	GM
15	-3.6	57	0.25	96	23	20	6	13	0.67	-0.03	67	53
21%	18%	62%	34%	49%	67%	1%	68%	77%	7%	79%	43%	14%

Age of Dam: 8 | Dam Weight: 1240 | dMPPA: 102

66 HALFMAN BOURNE SM H729
 02-07-2020 | GKH: H729 | 1A (100%) | #4274401

5L ADVANTAGE 3267-221Y BUF CRK THE RIGHT KIND U199
 5L ADINA 195-3267

5L BOURNE 117-48A
 5L ROXIE 854-117 5L SIGNATURE 5615
 XXX ROXIE 854 MR

BECKTON ACCENT W180 C2 BECKTON CODY K1 P014
 BECKTON CHRISTY R046 CQ

HALFMANN SANDMAN AC D494
 HALFMANN SANDMAN SY A784 BROWN SYNERGY X7838
 HALFMANN SANDMAN DY Y620

Individual Data												
act. BW	67											
SC	38											
Frame	M											

CED	BW	WW	ADG	YW	MLK	HPG	CEM	STY	MRB	REA	HB	GM
16	-5.4	64	0.23	101	30	18	6	16	0.58	0.13	83	34
9%	4%	35%	43%	38%	13%	1%	62%	45%	16%	42%	17%	51%

Age of Dam: 4 | Dam Weight: 1070 | dMPPA: 101



62 HALFMAN PROFITMAKER LK H785
 02-15-2020 | GKH: H785 | 1A (100%) | #4274379

WFL MERLIN 018A LJC MERLIN T179
 WFL COMMITMENT 042Y

WFL PROFITMAKER E7030
 WFL PROSPECT LSF PROSPECT 2035Z
 WFL HOBO 140Z

BECKTON NEW ERA Y194 BECKTON NEBULA P P707
 BKT LARKEISA T310 JC

HALFMANN LARKEISA NE C289
 BECKTON LARKEISA X094 H BECKTON HASTEN U108 J3
 BKT LARKEISA U583 NB

Individual Data												
act. BW	68											
SC	36											
Frame	M+											

CED	BW	WW	ADG	YW	MLK	HPG	CEM	STY	MRB	REA	HB	GM
18	-6.6	53	0.20	85	31	11	8	18	0.41	-0.16	88	32
4%	1%	74%	70%	74%	8%	47%	35%	14%	48%	95%	11%	56%

Age of Dam: 5 | Dam Weight: 1125 | dMPPA: 95

67 HALFMAN BOURNE MA H745
 02-09-2020 | GKH: H745 | 1A (100%) | #4274323

5L ADVANTAGE 3267-221Y BUF CRK THE RIGHT KIND U199
 5L ADINA 195-3267

5L BOURNE 117-48A
 5L ROXIE 854-117 5L SIGNATURE 5615
 XXX ROXIE 854 MR

HALFMANN NEBULAAL Y593 BECKTON NEBULA P P707
 HALFMANN ALEXIS U352

HALFMANN MATTIE NB A816
 HALFMANN MATTIE CH Y660 HALFMANN CHATEAU U335
 HALFMANN MATTIE U334

Individual Data												
act. BW	67											
SC	38											
Frame	M+											

CED	BW	WW	ADG	YW	MLK	HPG	CEM	STY	MRB	REA	HB	GM
15	-5.4	53	0.19	84	30	15	7	14	0.50	-0.02	68	25
17%	4%	74%	74%	75%	12%	4%	57%	68%	29%	77%	43%	71%

Age of Dam: 7 | Dam Weight: 1140 | dMPPA: 101

68 BECKTON DOMINOR H753 N9
 05-04-2020 | BKT: H753 | 1A (100%) | #4376699

BECKTON DOMINOR A378 W7 BECKTON DOMINOR Y005 V6
 BECKTON LANA Y541 W

BECKTON DOMINOR D254 N8
 BECKTON INDIGO W772 N BECKTON NEBULA T398 V3
 BECKTON INDIGO T613 JT

BECKTON NEBULA W486 D3 BECKTON NEBULA L P093
 BECKTON BELGAR716 DM

BECKTON TAMARA D428 N
 BECKTON TAMARA X628 E BECKTON EPIC K6 S569
 BECKTON TAMARA T201 CT

Individual Data												
act. BW	67											
SC	36											
Frame	M-											

CED	BW	WW	ADG	YW	MLK	HPG	CEM	STY	MRB	REA	HB	GM
17	-4.3	45	0.20	77	29	11	9	20	0.35	-0.01	91	36
5%	11%	91%	67%	84%	18%	50%	16%	4%	63%	75%	9%	46%

Age of Dam: 4 | Dam Weight: 944 | dMPPA: 106

Lots 62-64 are an attractive set of half-brothers by the \$50,000 Calving Ease specialist from ABS, ProfitMaker. The average lowest 3% BW EPD and best 6% for Calving Ease. These brothers would cover a big group of heifers and be stout enough to roll over onto the cow herd as they matured.

This catalog is loaded with calving ease bulls that deliver much more than just low birth weight. H753 comes with elite ranks for Stayability and Maternal Calving Ease and low feed intake.

63 HALFMAN CHROME LA H818
 03-07-2020 | GKH: H818 | 1A (100%) | #4274373

HALFMANN TAKEOVER SM C214 LSF TAKEOVER 9943W
 HALFMANN SANDMAN NB Z708

HALFMANN CHROME E818
 HALFMANN SIERRA NC C260 LSF NIGHT CALVER 9921W
 HALFMANN SIERRA SY A857

BROWN SYNERGY X7838 BECKTON NEBULA P P707
 CBAR BROWN ABIGRCE T714

HALFMANN LANA SY C248
 HALFMANN LANA CL A898 BECKTON CLIFFTP W692 E3
 BECKTON LANA U574 JL

Individual Data												
act. BW	68											
SC	38											
Frame	M											

CED	BW	WW	ADG	YW	MLK	HPG	CEM	STY	MRB	REA	HB	GM
19	-6.4	53	0.27	96	30	12	10	15	0.50	0.07	62	49
1%	1%	75%	19%	50%	11%	34%	5%	55%	29%	56%	55%	19%

Age of Dam: 5 | Dam Weight: 1063 | dMPPA: 102

64 HALFMAN PROFITMAKER BR H666
 01-20-2020 | GKH: H666 | 1A (100%) | #4274463

WFL MERLIN 018A LJC MERLIN T179
 WFL COMMITMENT 042Y

WFL PROFITMAKER E7030
 WFL PROSPECT LSF PROSPECT 2035Z
 WFL HOBO 140Z

LSF NIGHT CALVER 9921W MESSMER PACKER S008
 LSF DELLA P4078 U8051

HALFMANN BREE NC F045
 HALFMANN BREE SY 142D HALFMANN SYNERGY A883
 DAMAR Y121 BREE A142

Individual Data												
act. BW	76											
SC	38											
Frame	M+											

CED	BW	WW	ADG	YW	MLK	HPG	CEM	STY	MRB	REA	HB	GM
16	-4.8	61	0.24	100	34	13	9	16	0.53	0.35	79	46
13%	7%	45%	38%	41%	1%	25%	12%	39%	23%	9%	22%	25%

Age of Dam: 2 | Dam Weight: 1050 | dMPPA: 101

Even though he offers a lowest 7% BW EPD, H666 comes with triple-digit growth and a performance tabulation that includes ratios of: 109 YW, 118 ADG, 107 IMF and 116 REA.

69 BECKTON RANGER H870 L6
 06-09-2020 | BKT: H870 | 1A (100%) | #4376579

BECKTON RANGER Z225 J4 BECKTON RANGER T603 H3
 BECKTON MONA U564 JT

BECKTON RANGER B006 D5
 BECKTON SUFFEINA Z731 D BECKTON DOMINOR W640 C5
 BECKTON SUFFEINA W471 W

BECKTON LIKABLE U120 L2 BECKTON LIKABLE S633
 BECKTON LANA S718 LN

BECKTON PINE MARIE A446 L
 BKT PINE MARIE U481 NM BECKTON NOMAD 7496
 BKT PINE MARIE R246 JE

Individual Data												
act. BW	75											
SC	36.5											
Frame	M											

CED	BW	WW	ADG	YW	MLK	HPG	CEM	STY	MRB	REA	HB	GM
17	-3.9	52	0.22	87	26	11	7	13	0.47	-0.01	43	43
6%	15%	77%	56%	69%	42%	51%	39%	83%	35%	75%	86%	30%

Age of Dam: 7 | Dam Weight: 1180 | dMPPA: 105

The dam of Lot 69 breezed past her 6 year Stayability threshold with a 380 day calving interval and a 105 MPPA.





70 **BSF DOMINOR H707 E10**
 04-26-2020 | BSF : H707 | 1B (99.90%) | #4377753

BECKTON DOMINOR D254 N8 BECKTON DOMINOR A378 W7
 BECKTON INDIGO W772 N

BECKTON DOMINOR F207 A9
 BECKTON LARKABA D014 A BECKTON ACCENT B150 N4
 BECKTON LARKABA B352 A

BECKTON EPIC Z674 E6 BECKTON EPIC U749 D5
 BECKTON INDIGO U504 EP

BSF VIOLET F789 E
 BSF VIOLET X004 N BECKTON NEBULA U206 V3
 BSF VIOLET U102 VA

Individual Data	
act. BW	52
SC	32.5
Frame	M

CED	BW	WW	ADG	YW	MLK	HPG	CEM	STY	MRB	REA	HB	GM
18	-3.9	54	0.22	90	29	11	9	17	0.53	-0.10	63	37
3%	15%	71%	53%	64%	19%	50%	14%	35%	23%	89%	52%	44%

Age of Dam: 2 | Dam Weight: 845 | dMPPA: 98

Lots 70 and 71 are 5/8 brothers with exceptional calving ease and both born unassisted out of 2-year-old dams. They'd make a nice pair of bulls to turn out on a big group of your best replacements.



71 **BECKTON DOMINOR H034 E10**
 02-20-2020 | BSF : H034 | 1A (100%) | #4378281

BECKTON DOMINOR D254 N8 BECKTON DOMINOR A378 W7
 BECKTON INDIGO W772 N

BECKTON DOMINOR F207 A9
 BECKTON LARKABA D014 A BECKTON ACCENT B150 N4
 BECKTON LARKABA B352 A

BECKTON EPIC B483 N6 BECKTON EPIC U749 D5
 BKT PINE MARIE X339 N

BECKTON MINOLA F421 E
 BECKTON MINOLA X107 L BECKTON LIKABLE U120 L2
 BECKTON MINOLA U188 NB

Individual Data	
act. BW	59
SC	37
Frame	M-

CED	BW	WW	ADG	YW	MLK	HPG	CEM	STY	MRB	REA	HB	GM
18	-3.5	55	0.25	95	30	11	9	17	0.50	0.07	69	50
2%	20%	68%	33%	52%	12%	46%	14%	26%	29%	56%	41%	18%

Age of Dam: 2 | Dam Weight: 1015 | dMPPA:

72 **HALFMANN PROFITMAKER EO H668**
 01-22-2020 | CTH : H668 | 1A (100%) | #4274585

WFL MERLIN 018A LJC MERLIN T179
 WFL COMMITMENT 042Y

WFL PROFITMAKER E7030
 WFL PROSPECT LSF PROSPECT 2035Z
 WFL HOBO 140Z

BROWN JYJ REDEMPTION Y1334 BECKTON NEBULA P P707
 JYJ MS JOLENE W16

HALFMANN EOLA RE F049
 BECKTON EOLA U101 NB BECKTON NEBULA EN S347
 BECKTON EOLA S011 NB

Individual Data	
act. BW	60
SC	35
Frame	M

CED	BW	WW	ADG	YW	MLK	HPG	CEM	STY	MRB	REA	HB	GM
20	-7.2	57	0.19	87	33	11	9	15	0.45	-0.19	81	29
1%	1%	62%	74%	69%	2%	45%	9%	55%	39%	97%	19%	61%

Age of Dam: 2 | Dam Weight: 838 | dMPPA: 98

73 **HALFMANN PROFITMAKER IN H758**
 02-10-2020 | GKH : H758 | 1A (100%) | #4274493

WFL MERLIN 018A LJC MERLIN T179
 WFL COMMITMENT 042Y

WFL PROFITMAKER E7030
 WFL PROSPECT LSF PROSPECT 2035Z
 WFL HOBO 140Z

BECKTON LOKI C M740 BECKTON LOKI F251
 BKT LARKEISA J051 CK

BECKTON INDIGO S538 LO
 BECKTON INDIGO M585 LN BECKTON LANCER TH K417
 BECKTON INDIGO K601 EP

Individual Data	
act. BW	50
SC	36
Frame	M+

CED	BW	WW	ADG	YW	MLK	HPG	CEM	STY	MRB	REA	HB	GM
21	-8.5	50	0.22	84	27	9	11	18	0.39	-0.27	76	37
1%	1%	83%	58%	75%	33%	89%	3%	21%	53%	99%	26%	42%

Age of Dam: 14 | Dam Weight: 1220 | dMPPA: 90

If you like herd bulls out of dams that have proven adaptability and longevity, take a good look at H758., whose dam was 14 when he was weaned.

74 **HALFMANN CHROME LA H834**
 03-20-2020 | CTH : H834 | 1A (100%) | #4274555

HALFMANN TAKEOVER SM C214 LSF TAKEOVER 9943W
 HALFMANN SANDMAN NB Z708

HALFMANN CHROME E818
 HALFMANN SIERRA NC C260 LSF NIGHT CALVER 9921W
 HALFMANN SIERRA SY A857

BECKTON NEW ERA Y194 BECKTON NEBULA P P707
 BKT LARKEISA T310 JC

HALFMANN LANA NE C237
 BECKTON LANA U574 JL BECKTON JULIAN G3 P608
 BECKTON LANA R241 JC

Individual Data	
act. BW	77
SC	39
Frame	M

CED	BW	WW	ADG	YW	MLK	HPG	CEM	STY	MRB	REA	HB	GM
18	-5.8	51	0.24	90	25	13	8	16	0.41	-0.01	47	39
2%	3%	79%	37%	63%	48%	16%	29%	47%	48%	75%	82%	37%

Age of Dam: 5 | Dam Weight: 1360 | dMPPA: 96

Here's one of the really deep bodied, long hipped bulls in the sale. Despite his best 2% Calving Ease EPD he gained 14% than his contemporaries in the post-weaning phase.

75 **HALFMANN CHROME SM H812**
 03-05-2020 | CTH : H812 | 1A (100%) | #4274557

HALFMANN TAKEOVER SM C214 LSF TAKEOVER 9943W
 HALFMANN SANDMAN NB Z708

HALFMANN CHROME E818
 HALFMANN SIERRA NC C260 LSF NIGHT CALVER 9921W
 HALFMANN SIERRA SY A857

SANDMAN RCN SANDHILL CHF 416
 PANHANDLE POLLY 4119

HALFMANN SANDMAN MR C256
 BECKTON MARTA U079 NB BECKTON NEBULA EN S347
 BECKTON MARTA S772 LO

Individual Data	
act. BW	70
SC	36
Frame	M

CED	BW	WW	ADG	YW	MLK	HPG	CEM	STY	MRB	REA	HB	GM
19	-6.2	48	0.23	85	30	13	10	16	0.40	0.11	60	37
2%	2%	86%	48%	74%	10%	21%	7%	41%	50%	46%	58%	43%

Age of Dam: 5 | Dam Weight: 1310 | dMPPA: 98

77 **HALFMANN MERLIN 44 H787**
 02-17-2020 | GKH : H787 | 1A (100%) | #4274399

LJC MERLIN T179 LJC MISSION STATEMENT P27
 BUF CRK REDPRIDE N179

WFL MERLIN 018A
 WFL COMMITMENT 042Y BROWN COMMITMENT S7206
 WFL JEWELMAKER 9024

OK DOUBLE CHIEF 4430 PBC 373 D0202
 PBC 373 6F E0901

HALFMANN CHOCTAW 4430 D487
 HALFMANN CHOCTAW CHIEF C304 CHOCTAW CHIEF 373
 JAN 9617 MILLER CHIEF

Individual Data	
act. BW	81
SC	38
Frame	M+

CED	BW	WW	ADG	YW	MLK	HPG	CEM	STY	MRB	REA	HB	GM
12	-2.3	59	0.18	87	32	9	6	15	0.35	0.06	64	20
61%	40%	55%	80%	69%	4%	79%	79%	58%	63%	59%	50%	80%

Age of Dam: 4 | Dam Weight: 1090 | dMPPA: 99



76 **HALFMANN MERLIN CH H687**
 02-02-2020 | GKH : H687 | 1A (100%) | #4274385

LJC MERLIN T179 LJC MISSION STATEMENT P27
 BUF CRK REDPRIDE N179

WFL MERLIN 018A
 WFL COMMITMENT 042Y BROWN COMMITMENT S7206
 WFL JEWELMAKER 9024

CHOCTAW CHIEF 373 CHOCTAW CHIEF
 KC ELZB OA 130

HALFMANN CHOCTAW CHIEF C304
 JAN 9617 MILLER CHIEF PBC D0202 6M H3554
 JDW 122 CHIGATAW 221

Individual Data	
act. BW	74
SC	41
Frame	M+

CED	BW	WW	ADG	YW	MLK	HPG	CEM	STY	MRB	REA	HB	GM
13	-3.6	50	0.15	74	35	8	7	20	0.53	-0.18	84	16
37%	18%	82%	91%	87%	1%	94%	46%	5%	23%	96%	16%	86%

Age of Dam: 17 | Dam Weight: ET | dMPPA: 99

Lots 76 and 77 are both Merlin sons out of old Chief line Red Angus genetics. The sire lines behind the dams of Lots 76 and 77 built the Red Angus breed. This bull's maternal grandsire was born in 1965.

78 **HALFMANN SUPREMACY MA H765**
 02-12-2020 | GKH : H765 | 1A (100%) | #4274451

5L BOURNE 670-111C 5L BOURNE 117-48A
 5L ADINA 2174-670

SCHULER SUPREMACY 7177E
 SOR KARVE ENDRNCE 4205B SCHULER ENDURANCE 2101Z
 SOR KARVE PCKR 2625Z

BECKTON CLIFFTOP W692 E3 BKT CLIFFTOP TP R288
 BECKTON LYDIA S274 EP

HALFMANN MATTIE CT E827
 HALFMANN MATTIE NB A816 HALFMANN NEBULAAL Y593
 HALFMANN MATTIE CH Y660

Individual Data	
act. BW	70
SC	36
Frame	M

CED	BW	WW	ADG	YW	MLK	HPG	CEM	STY	MRB	REA	HB	GM
15	-3.7	49	0.22	84	29	10	8	16	0.31	-0.11	70	22
16%	17%	85%	53%	74%	15%	69%	37%	39%	73%	91%	37%	75%

Age of Dam: 3 | Dam Weight: 908 | dMPPA: 99



3SCC DOMAIN A163 - Sire of Lots 79-81

79 HALFMANN DOMAIN AN H769
 02-12-2020 | GKH : H769 | 1A (100%) | #4274433

BECKTON DOMINOR T122 Z1 BECKTON DOMINOR Z1 R610
 BKT LARKABEL R038 WA

3SCC DOMAIN A163
 3SCC EUCLA X723 BASIN HOBO 0545
 BSKF EUCLA U278

BUF CRK THE RIGHT KIND U199 BUF CRK LANCER R017
 BUF CRK SHOSHONE R353

HALFMANN ANKATA RK E771
 HALFMANN ANKATA CH A903 HALFMANN CHATEAU Y633
 HALFMANN ANKATA U393

Individual Data	
act. BW	74
SC	35
Frame	M

CED	BW	WW	ADG	YW	MLK	HPG	CEM	STY	MRB	REA	HB	GM
15	-2.8	59	0.22	94	22	13	6	16	0.54	-0.04	67	38
23%	31%	55%	52%	54%	75%	19%	70%	38%	22%	81%	45%	40%

Age of Dam: 3 | Dam Weight: 1180 | dMPPA: 102

Improving uniformity is one of the fastest and easiest ways to increase value. These three Age-Advantaged Domain sons selling as Lots 79-81 should be able to cover 75-90 of your best females in in big country.

82 HALFMANN MERLIN BU H716
 02-06-2020 | GKH : H716 | 1A (100%) | #4274443

LJC MERLIN T179 LJC MISSION STATEMENT P27
 BUF CRK REDPRIDE N179

WFL MERLIN 018A
 WFL COMMITMENT 042Y BROWN COMMITMENT S7206
 WFL JEWELMAKER 9024

MRM 8016 J027 8207 MRM ZIA GRANDE 8016
 HALFMAN CHINOOK J027

HALFMANN BULLISTIC 8207 E788
 HALFMANN BULLISTIC MS Z742 HALFMANN MSTATEMNT X580
 HALFMANN BULLISTIC MS X474

Individual Data	
act. BW	68
SC	38
Frame	L

CED	BW	WW	ADG	YW	MLK	HPG	CEM	STY	MRB	REA	HB	GM
14	-3.5	68	0.23	105	30	7	7	11	0.35	0.04	26	33
26%	20%	20%	45%	29%	12%	96%	48%	91%	63%	63%	97%	53%

Age of Dam: 3 | Dam Weight: 1185 | dMPPA: 106

83 BECKTON EPIC H718 H8
 04-27-2020 | BKT : H718 | 1A (100%) | #4376747

BECKTON EPIC B483 N6 BECKTON EPIC U749 D5
 BKT PINE MARIE X339 N

BECKTON EPIC D001 L7
 BECKTON MONA B713 L BECKTON LEGEND U331 E2
 BECKTON MONA U564 JT

BIEBER H HUGHES W109 BASIN HOBO 0545
 BASIN ROSE 06T0

BECKTON SERENA D480 B
 BECKTON SERENA A269 D BECKTON DOMINR Y005 V6
 BECKTON SERENA Y044 E

Individual Data	
act. BW	61
SC	38.5
Frame	M

CED	BW	WW	ADG	YW	MLK	HPG	CEM	STY	MRB	REA	HB	GM
19	-6.3	50	0.19	81	27	10	11	16	0.33	-0.01	75	29
1%	2%	82%	72%	79%	32%	69%	1%	48%	68%	75%	28%	62%

Age of Dam: 4 | Dam Weight: 990 | dMPPA: 97

80 HALFMANN DOMAIN LA H784
 02-15-2020 | GKH : H784 | 1A (100%) | #4274313

BECKTON DOMINOR T122 Z1 BECKTON DOMINOR Z1 R610
 BKT LARKABEL R038 WA

3SCC DOMAIN A163
 3SCC EUCLA X723 BASIN HOBO 0545
 BSKF EUCLA U278

BECKTON EPIC X330 L6 BECKTON EPIC T330 L5
 BECKTON KIT R503 LN

BECKTON LANA A642 E
 BECKTON LANA X410 R BECKTON RANGR T603 H3
 BECKTON LANA S866 CH

Individual Data	
act. BW	80
SC	39
Frame	M+

CED	BW	WW	ADG	YW	MLK	HPG	CEM	STY	MRB	REA	HB	GM
13	-1.6	65	0.27	107	22	11	4	14	0.45	0.04	40	34
43%	54%	31%	20%	25%	80%	51%	95%	75%	39%	63%	89%	50%

Age of Dam: 7 | Dam Weight: 1145 | dMPPA: 102

81 HALFMANN DOMAIN AN H474
 02-09-2020 | GKH : H747 | 1A (100%) | #4274353

BECKTON DOMINOR T122 Z1 BECKTON DOMINOR Z1 R610
 BKT LARKABEL R038 WA

3SCC DOMAIN A163
 3SCC EUCLA X723 BASIN HOBO 0545
 BSKF EUCLA U278

BECKTON WARRIOR Z936 N6 BECKTON WARRIOR T248 L5
 BECKTON FREYJA W462 N

BECKTON ANGEL B140 W
 BECKTON ANGEL Z927 W BECKTON WARRIOR T248 L5
 BECKTON ANGEL R465 WR

Individual Data	
act. BW	77
SC	37
Frame	M

CED	BW	WW	ADG	YW	MLK	HPG	CEM	STY	MRB	REA	HB	GM
15	-2.1	57	0.22	93	25	13	6	16	0.57	-0.12	63	46
18%	42%	62%	51%	58%	49%	25%	78%	48%	17%	92%	52%	24%

Age of Dam: 6 | Dam Weight: 1077 | dMPPA: 101

84 BECKTON NOMAD H389 E2
 03-27-2020 | BKT : H389 | 1A (100%) | #4377113

BECKTON NEVA 5562 BKT PINE 2778-8
 BKT MO1634-1549

BECKTON NOMAD 7496
 BKT BOLT TAMRCK 3913 THUNDERBOLT
 MD 373 RC 523

BECKTON EPIC A286 E7 BECKTON EPIC Y484 N6
 BECKTON LARKABA Y648 E

BECKTON EMERA C066 E
 BECKTON EMERA A029 D BECKTON DOMINR Y005 V6
 BECKTON EMERA Y009 D

Individual Data	
act. BW	74
SC	37.5
Frame	M-

CED	BW	WW	ADG	YW	MLK	HPG	CEM	STY	MRB	REA	HB	GM
21	-6.3	37	0.12	56	20	10	10	13	0.36	-0.43	61	26
1%	2%	98%	96%	97%	88%	63%	4%	81%	60%	99%	57%	68%

Age of Dam: 5 | Dam Weight: 1240 | dMPPA: 96



85 BECKTON RANGER H881 N6
 06-17-2020 | BKT : H881 | 2 (100%) | #4376569

BECKTON RANGER Z225 J4 BECKTON RANGER T603 H3
 BECKTON MONA U564 JT

BECKTON RANGER B006 D5
 BECKTON SUFFEINA Z731 D BECKTON DOMINOR W640 C5
 BECKTON SUFFEINA W471 W

BECKTON NEBULA B620 E5 BECKTON NEBULA X096 N4
 BECKTON LAKME P513 EP

BECKTON CHRISTY D394 N
 BECKTON CHRISTY B471 N BECKTON NEW ERA Y194
 BECKTON CHRISTY T410 JO

Individual Data	
act. BW	77
SC	35.5
Frame	M

CED	BW	WW	ADG	YW	MLK	HPG	CEM	STY	MRB	REA	HB	GM
15	-3.7	57	0.27	100	27	12	7	14	0.49	-0.05	54	52
16%	17%	62%	18%	40%	27%	33%	57%	68%	32%	82%	70%	15%

Age of Dam: 4 | Dam Weight: 1000 | dMPPA: 108

H881's dam is linebred to the legendary P707, and has emerged as one of our most productive young females - earning a 108 MPPA as a 4-yr-old.



Chad demonstrates moisture saving and erosion control benefits of no-till cotton.



John Stipes
 Outside Sales Representative
 214-435-6051
 john.stipes@animalhealthinternational.com
 animalhealthinternational.com





86 **BECKTON JULIAN H416 D4**
 03-28-2020 | BKT : H416 | 1A (100%) | #4377081

BKT JULIAN 7526 G BECKTON JULIAN 6592
 BKT BELGA 6746 GS

BECKTON JULIAN GG B571
 BKT MARTA 9A13 JL BKT JULIAN 7526 G
 BKT MARTA 6498 XM

BECKTON DOMINOR W640 C5 BECKTON DOMINOR Z1 R610
 BECKTON MONAR166 CQ

BECKTON LARKEISA E447 D
 BECKTON LARKEISA B885 J4 BECKTON EMCEE Z619 J3
 BECKTON LARKEISA Z892 J

Individual Data	
act. BW	67
SC	39
Frame	M

CED	BW	WW	ADG	YW	MLK	HPG	CEM	STY	MRB	REA	HB	GM
20	-6.4	40	0.11	58	24	14	5	14	0.45	0.03	52	30
1%	1%	96%	97%	97%	56%	12%	88%	73%	39%	66%	74%	60%

Age of Dam: 3 | Dam Weight: 850 | dMPPA: 96

An own son of B571, arguably the most influential sire in the Red Angus breed. Even today, almost 30 years after he was born, B571 semen routinely fetches \$500 per straw on the rare occasions when it changes hands.



87 **BECKTON LIKABLE H285 L4**
 03-22-2020 | BKT : H285 | 1A (100%) | #4377235

BECKTON LIKABLE U130 L2 BECKTON LIKABLE S633
 BECKTON KIT S478 LN

BECKTON LIKABLE D432 N3
 BECKTON FIREFLY W013 N BECKTON NEBULA T054 H3
 BECKTON FIREFLY T003 JC

BECKTON LIKABLE Y362 L3 BECKTON LIKABLE U130 L2
 BECKTON TAMARA M515 LN

BECKTON TAMARA D658 L
 BECKTON TAMARA A798 L BECKTON LIKABLE Y675 E3
 BECKTON TAMARA Y585 N

Individual Data	
act. BW	63
SC	35.5
Frame	M-

CED	BW	WW	ADG	YW	MLK	HPG	CEM	STY	MRB	REA	HB	GM
19	-6.4	36	0.15	60	21	10	9	16	0.52	0.16	79	40
1%	1%	98%	90%	96%	86%	78%	16%	45%	25%	35%	21%	36%

Age of Dam: 4 | Dam Weight: 890 | dMPPA: 90

88 **HALFMANN PROFITMAKER SI H715**
 02-06-2020 | CFH : H715 | 1A (100%) | #4274661

WFL MERLIN 018A LJC MERLIN T179
 WFL COMMITMENT 042Y

WFL PROFITMAKER E7030
 WFL PROSPECT LSF PROSPECT 2035Z
 WFL HOBO 140Z

BUF CRK THE RIGHT KIND U199 BUF CRK LANCER R017
 BUF CRK SHOSHONE R353

HALFMANN SIERRA RK E722
 HALFMANN SIERRA NB X467 BECKTON NEBULA P P707
 HALFMANN SIERRA U330

Individual Data	
act. BW	63
SC	37
Frame	M

CED	BW	WW	ADG	YW	MLK	HPG	CEM	STY	MRB	REA	HB	GM
19	-6.8	52	0.20	85	31	12	10	18	0.39	-0.03	98	29
1%	1%	76%	67%	74%	9%	36%	7%	22%	53%	79%	5%	62%

Age of Dam: 3 | Dam Weight: 832 | dMPPA: 95

This ProfitMaker son is a grandson of X467 (see photo on page 16) who has several sons and grandsons in the sale.

89 **HALFMANN TOPGUN AN H732**
 02-07-2020 | GKH : H732 | 1A (100%) | #4274383

5L ADVANTAGE 3267-221Y BUF CRK THE RIGHT KIND U199
 5L ADINA 195-3267

5L TOPGUN 560-65B
 5L BLACK ADINA 525-560 TC STOCKMAN 365
 5L ADINA 293-525

HALFMANN NEBULA MT Z725 BECKTON NEBULA P P707
 HALFMANN MATTIE T336

HALFMANN ANKATA NB C314
 HALFMANN ANKATA U393 BECKTON HALFMINHUSTLER R588
 HALFMANN ANKATA L607

Individual Data	
act. BW	71
SC	38
Frame	M+

CED	BW	WW	ADG	YW	MLK	HPG	CEM	STY	MRB	REA	HB	GM
15	-5.8	53	0.20	84	20	19	7	15	0.54	0.09	79	44
22%	3%	76%	71%	75%	88%	1%	39%	52%	22%	52%	22%	28%

Age of Dam: 5 | Dam Weight: 1565 | dMPPA: 98

90 **HALFMANN BOURNE IN H738**
 02-08-2020 | CFH : H738 | 1A (100%) | #4274665

5L ADVANTAGE 3267-221Y BUF CRK THE RIGHT KIND U199
 5L ADINA 195-3267

5L BOURNE 117-48A
 5L ROXIE 854-117 5L SIGNATURE 5615
 XXX ROXIE 854 MR

BECKTON ACCENT W180 C2 BECKTON CODY K1 P014
 BECKTON CHRISTY R046 CQ

HALFMANN INDIGO AC E752
 BECKTON INDIGO U764 NB BECKTON NEBULA E P084
 BECKTON INDIGO K331 CO

Individual Data	
act. BW	68
SC	37
Frame	M

CED	BW	WW	ADG	YW	MLK	HPG	CEM	STY	MRB	REA	HB	GM
18	-5.9	62	0.19	93	28	17	7	17	0.59	-0.01	93	30
2%	2%	41%	74%	58%	21%	1%	39%	28%	15%	75%	7%	59%

Age of Dam: 3 | Dam Weight: 1080 | dMPPA: 99

91 **HALFMANN TOPGUN AN H753**
 02-09-2020 | GKH : H753 | 1A (100%) | #4274375

5L ADVANTAGE 3267-221Y BUF CRK THE RIGHT KIND U199
 5L ADINA 195-3267

5L TOPGUN 560-65B
 5L BLACK ADINA 525-560 TC STOCKMAN 365
 5L ADINA 293-525

BECKTON NEBULA P P707 BECKTON NEBULA M045
 BECKTON LANAM809 EP

HALFMANN ANKATA NB C263
 HALFMANN ANKATA PK Z727 MESSMER PACKER S008
 HALFMANN ANKATA L607

Individual Data	
act. BW	75
SC	40
Frame	M

CED	BW	WW	ADG	YW	MLK	HPG	CEM	STY	MRB	REA	HB	GM
17	-5.3	49	0.22	84	22	20	9	13	0.58	0.02	85	53
6%	4%	84%	55%	75%	75%	1%	14%	79%	16%	68%	14%	14%

Age of Dam: 5 | Dam Weight: 944 | dMPPA: 100

92 **HALFMANN NIGHT CALVER H828**
 03-17-2020 | CFH : H828 | 1A (100%) | #4274659

LSF NIGHT CALVER 9921W MESSMER PACKER S008
 LSF DELLA P4078 U8051

HALFMANN NIGHT CALVER C206
 HALFMANN SANDMAN SY A784 BROWN SYNERGY X7838
 HALFMANN SANDMAN DY Y620

BECKTON ACCENT W180 C2 BECKTON CODY K1 P014
 BECKTON CHRISTY R046 CQ

HALFMANN SIERRA AC E721
 HALFMANN SIERRA NB X467 BECKTON NEBULA P P707
 HALFMANN SIERRA U330

Individual Data	
act. BW	56
SC	38
Frame	M-

CED	BW	WW	ADG	YW	MLK	HPG	CEM	STY	MRB	REA	HB	GM
21	-8	55	0.20	88	32	14	12	20	0.43	0.11	115	28
1%	1%	67%	66%	67%	4%	13%	1%	6%	43%	46%	1%	65%

Age of Dam: 3 | Dam Weight: 884 | dMPPA: 108

Here's the same cow family that produced the Lots 31 and 38. See the picture of X467, the maternal grandam of Lot 92 on page 16. With a grandam like X467, it's no surprise that H828's dam is on her way to becoming one of our most productive and repeatable dams, already earning a 108 MPPA as a 3-yr-old.

THIS FEEDING SEASON, USE NUTRIENT RICH MIX 30 LIQUID FEED.

Suppling 16% Protein, 10% Fat and other essential nutrients, MIX 30 can get your cattle through the toughest seasons of the year economically.

MIX 30

Mike Block
 503-871-1593

93 **HALFMANN BENELLI RE H811**
 03-04-2020 | GKH: H811 | 1A (100%) | #4274299

BECKTON ACCENT Y312 N3
 BECKTON ACCENT U777 C2
 BKT LARKEISA S055 NB

HALFMANN BENELLI CC E773
 HALFMANN CHOCTAW NC B007 LSF NIGHT CALVER 9921W
 HALFMANN CHOCTAW NB Z703

HALFMANN SYNERGY MN A883 BROWN SYNERGY X7838
 HALFMANN MONA MS X468

HALFMANN REALIN SY 318D
 DAMAR Y157 REALIN A318 DAMAR PACKTIN 1819
 DAMAR REALIN Y157

Individual Data	
act. BW	76
SC	38
Frame	M+

CED	BW	WW	ADG	YW	MLK	HPG	CEM	STY	MRB	REA	HB	GM
12	-2.8	64	0.22	99	30	14	7	15	0.47	0.05	63	25
57%	31%	34%	56%	44%	10%	10%	57%	62%	35%	61%	54%	71%
Age of Dam: 4		Dam Weight: 1265		dMPPA: 106								

94 **HALFMANN SUPREMACY AL H770**
 02-12-2020 | CFH: H770 | 1A (100%) | #4274631

5L BOURNE 670-111C
 5L BOURNE 117-48A
 5L ADINA 2174-670

SCHULER SUPREMACY 7177E
 SOR KARVE ENDRANCE 4205B SCHULER ENDURANCE 2101Z
 SOR KARVE PCKR 2625Z

BECKTON EPIC R397 K
 BECKTON EPIC K F075
 BECKTON KIT F468 JL

HALFMANN ALEXIS EP C292
 HALFMANN ALEXIS NB Y602 BECKTON NEBULA P P707
 HALFMANN MISS ALEXIS

Individual Data	
act. BW	94
SC	39
Frame	M

CED	BW	WW	ADG	YW	MLK	HPG	CEM	STY	MRB	REA	HB	GM
10	-0.7	60	0.28	105	28	14	5	19	0.36	0.12	69	36
83%	71%	48%	13%	29%	21%	9%	85%	10%	60%	44%	41%	46%
Age of Dam: 5		Dam Weight: 1295		dMPPA: 98								

Lot 82 is one of several bulls that are out of first calf heifers. G558's dam is off to a great start in our program, weaning her first calf at a 117 WW ratio.

98 **BSF LIKABLE H780 S4**
 05-09-2020 | BSF: H780 | B (99.90%) | #4377703

BECKTON LIKABLE U130 L2
 BECKTON LIKABLE S633
 BECKTON KIT S478 LN

BECKTON LIKABLE D432 N3
 BECKTON FIREFLY W013 N
 BECKTON NEBULA T054 H3
 BECKTON FIREFLY T003 JC

BECKTON SCAMP X494 E3
 BECKTON SCAMP T A825
 BECKTON LANA S074 EP

BSF WENDIE C536 S
 BSF WENDIE X068 N
 BECKTON NEBULA U031 D3
 BSF WENDIE U152 CT

Individual Data	
act. BW	74
SC	38
Frame	M-

CED	BW	WW	ADG	YW	MLK	HPG	CEM	STY	MRB	REA	HB	GM
16	-4.3	42	0.16	67	25	11	8	15	0.38	0.18	72	19
8%	11%	94%	88%	92%	52%	42%	21%	59%	55%	32%	35%	82%
Age of Dam: 5		Dam Weight: 1295		dMPPA: 94								

99 **BECKTON LIKABLE H118 A6**
 03-06-2020 | BKT: H118 | 1A (100%) | #4377437

BECKTON LIKABLE Z057 L4
 BECKTON LIKABLE X445 J3
 BECKTON MINOLA X107 L

BECKTON LIKABLE F520 N5
 BECKTON SIERRA A836 N
 BECKTON NEW ERA Y194
 BECKTON SIERRA S847 WR

BECKTON LEGEND B653 C2
 BECKTON ACCENT U777 C2
 BECKTON CHRISTY W779 C

BECKTON KIT F409 A
 BECKTON KIT Z049 N
 BECKTON NEBULA X353 E3
 BECKTON KIT X236 L

Individual Data	
act. BW	55
SC	38.5
Frame	S+

CED	BW	WW	ADG	YW	MLK	HPG	CEM	STY	MRB	REA	HB	GM
15	-3.7	53	0.21	88	23	12	4	15	0.35	0.09	52	28
23%	17%	74%	59%	68%	70%	29%	93%	61%	63%	52%	74%	65%
Age of Dam: 2		Dam Weight: 880		dMPPA: 98								

95 **HALFMANN BENELLI MO H829**
 03-18-2020 | CFH: H829 | 1A (100%) | #4274617

BECKTON ACCENT Y312 N3
 BECKTON ACCENT U777 C2
 BKT LARKEISA S055 NB

HALFMANN BENELLI CC E773
 HALFMANN CHOCTAW NC B007 LSF NIGHT CALVER 9921W
 HALFMANN CHOCTAW NB Z703

LSF TAKEOVER 9943W
 HXC CONQUEST 4405P
 LSF WIDELoad R5014 U8061

HALFMANN MONA TO B039
 BECKTON MONA T493 NB
 BECKTON NEBULA M045
 BECKTON MONA P539 CH

Individual Data	
act. BW	71
SC	35
Frame	M-

CED	BW	WW	ADG	YW	MLK	HPG	CEM	STY	MRB	REA	HB	GM
15	-4.8	57	0.17	84	28	14	5	14	0.73	0.00	61	40
23%	7%	62%	83%	74%	23%	8%	81%	74%	4%	72%	56%	37%
Age of Dam: 6		Dam Weight: 1185		dMPPA: 100								

96 **HALFMANN BENELLI MA H827**
 03-17-2020 | CTH: H827 | 1A (100%) | #4274551

BECKTON ACCENT Y312 N3
 BECKTON ACCENT U777 C2
 BKT LARKEISA S055 NB

HALFMANN BENELLI CC E773
 HALFMANN CHOCTAW NC B007 LSF NIGHT CALVER 9921W
 HALFMANN CHOCTAW NB Z703

LSF NIGHT CALVER 9921W
 MESSMER PACKER S008
 LSF DELLA P4078 U8051

HALFMANN MATTIE NC C210
 HALFMANN MATTIE MS A845
 HALFMANN MSTTEMINTAL X580
 HALFMANN MATTIE T336

Individual Data	
act. BW	84
SC	40
Frame	M

CED	BW	WW	ADG	YW	MLK	HPG	CEM	STY	MRB	REA	HB	GM
11	-1.7	68	0.26	109	30	16	5	15	0.49	0.22	67	45
78%	52%	20%	28%	22%	12%	2%	81%	58%	32%	24%	44%	27%
Age of Dam: 5		Dam Weight: 1585		dMPPA: 104								

100 **BECKTON CARDINAL H622 N2**
 04-13-2020 | BSF: H622 | 1A (100%) | #4377825

TR DOUBLE EAGLE ZT220
 TR RICARDO DOS
 BECKTON LANA U182 JC

BECKTON CARDINAL E673 L
 BECKTON LARKABA A911 L
 BECKTON LEGEND U331 E2
 BECKTON LARKABA T418 WA

BECKTON NEBULA U031 D3
 BECKTON NEBULA G S237
 BECKTON MARTA S459 DM

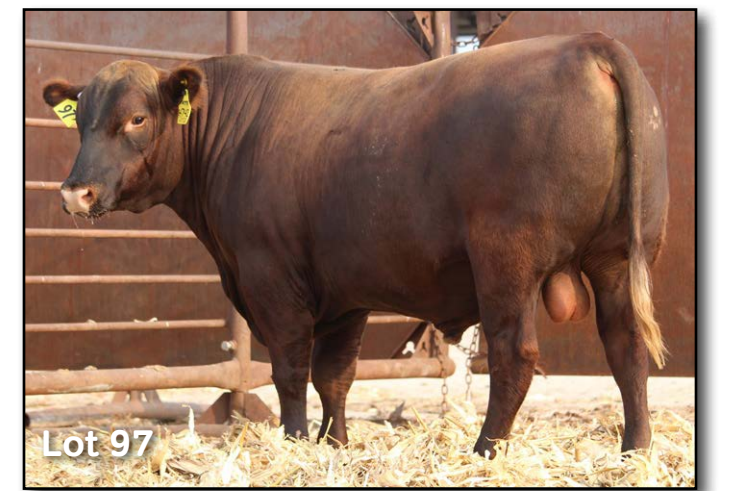
BECKTON MARTA X010 N
 BECKTON MARTA U079 NB
 BECKTON NEBULA EN S347
 BECKTON MARTA S772 LO

Individual Data	
act. BW	56
SC	37.5
Frame	M

CED	BW	WW	ADG	YW	MLK	HPG	CEM	STY	MRB	REA	HB	GM
21	-7.8	46	0.15	71	30	11	11	18	0.61	-0.02	75	39
1%	1%	90%	89%	90%	13%	49%	3%	22%	13%	77%	29%	38%
Age of Dam: 10		Dam Weight: 955		dMPPA: 104								



Lot 99



Lot 97

97 **BECKTON NEBULA H742 E5**
 05-02-2020 | BKT: H742 | 1A (100%) | #4376715

BECKTON NEBULA T398 V3
 BECKTON NEBULA L P093
 BECKTON MINERVA J615 VG

BECKTON NEBULA A773 L4
 BECKTON MONA X022 L
 BECKTON LIKABLE U130 L2
 BECKTON MONA U584 CD

BECKTON EPIC B376 N6
 BECKTON EPIC U749 D5
 BECKTON TAMARA U185 NB

BECKTON FIREFLY E275 E
 BECKTON FIREFLY W013 N
 BECKTON NEBULA T054 H3
 BECKTON FIREFLY T003 JC

Individual Data	
act. BW	55
SC	33.5
Frame	M-

CED	BW	WW	ADG	YW	MLK	HPG	CEM	STY	MRB	REA	HB	GM
20	-6.4	46	0.16	72	25	11	10	21	0.40	0.02	102	36
1%	1%	90%	86%	89%	54%	53%	5%	2%	50%	68%	3%	45%
Age of Dam: 3		Dam Weight: 815		dMPPA: 93								

101 **HALFMANN BENELLI CO H860**
 04-10-2020 | GKH: H860 | 1A (100%) | #4274491

BECKTON ACCENT Y312 N3
 BECKTON ACCENT U777 C2
 BKT LARKEISA S055 NB

HALFMANN BENELLI CC E773
 HALFMANN CHOCTAW NC B007 LSF NIGHT CALVER 9921W
 HALFMANN CHOCTAW NB Z703

BECKTON NEBULA M045
 BECKTON NEPTUNE R2 K065
 BECKTON BELGAK285 JL

BECKTON COCA R675 NB
 BECKTON COCA H745 CS
 BECKTON CAESAR M D023
 BECKTON COCA E051 CL

Individual Data	
act. BW	82
SC	37
Frame	M+

CED	BW	WW	ADG	YW	MLK	HPG	CEM	STY	MRB	REA	HB	GM
13	-3.3	56	0.21	90	25	15	5	17	0.53	-0.19	81	29
51%	23%	64%	61%	63%	52%	5%	91%	37%	23%	97%	20%	61%
Age of Dam: 15		Dam Weight: 1025		dMPPA: 93								

The AMAZINGLY fertile dam of Lot 101 maintained a 367 day calving interval as a 14 year old. She was born in April of 2005, weaned her last calf in the fall of 2020 and left Halfmann Red Angus in January of 2021. This bull's dam may be the most profitable cow we've owned in the last decade or two.

102 **HALFMANN BOURNE AL H766**
 02-12-2020 | CFH: H766 | 1A (100%) | #4274709

5L ADVANTAGE 3267-221Y
 BUF CRK THE RIGHT KIND U199
 5L ADINA 195-3267

5L BOURNE 117-48A
 5L ROXIE 854-117
 5L SIGNATURE 5615
 XXX ROXIE 854 MR

LJC MISSION STATEMENT P27
 LJC LANCER 806
 LJC HANNAH 106

HALFMANN ALEXIS U352
 HALFMANN ALEXIS L621
 OLC CHATEAU L416
 HALFMANN MISS ALEXIS

Individual Data	
act. BW	76
SC	40
Frame	M+

CED	BW	WW	ADG	YW	MLK	HPG	CEM	STY	MRB	REA	HB	GM
12	-3.2	61	0.24	99	29	14	5	14	0.48	0.29	54	34
60%	24%	45%	40%	42%	16%	13%	83%	75%	33%	15%	70%	50%
Age of Dam: 12		Dam Weight: 1240		dMPPA: 101								

Not to be outdone, the 12-year-old dam of H766 has maintained a 369 day calving interval and a 101 MPPA. This Bourne son was her last calf and she weaned him 3% heavier than the average of the herd. Mind you - the average of the herd was half her age!

103 HALFMAN PROFITMAKER LA H733
02-08-2020 | GKH: H733 | 1A (100%) | #4274529

WFL MERLIN 018A LJC MERLIN T179
WFL PROFITMAKER E7030 WFL COMMITMENT 042Y

WFL PROSPECT LSF PROSPECT 2035Z
WFL HOBO 140Z

BECKTON NEBULA T269 E2 BECKTON NEBULA M045
BECKTON LANA Y628 N BECKTON RUTH M967 EP

BECKTON LANA U383 NB BECKTON NEBULA L P093
BECKTON LANA N310 EP

Individual Data	
act. BW	73
SC	41
Frame	M

CED	BW	WW	ADG	YW	MLK	HPG	CEM	STY	MRB	REA	HB	GM
16	-5.3	59	0.19	89	33	11	8	16	0.26	-0.05	84	6
10%	4%	53%	75%	65%	3%	44%	35%	39%	85%	82%	16%	96%

Age of Dam: 9 | Dam Weight: 1000 | dMPPA: 101

104 HALFMAN PROFITMAKER CC H696
02-03-2020 | GKH: H696 | 1A (100%) | #4274355

WFL MERLIN 018A LJC MERLIN T179
WFL PROFITMAKER E7030 WFL COMMITMENT 042Y

WFL PROSPECT LSF PROSPECT 2035Z
WFL HOBO 140Z

HALFMANN NEBULA AAL Y593 BECKTON NEBULA P F707
HALFMANN CHOCTAW NB B153 HALFMANN ALEXIS U352

HALFMANN CHOCTAW U347 OLC CHATEAU L416
HALFMANN CHOCTAW CHIEF C304

Individual Data	
act. BW	60
SC	37
Frame	M

CED	BW	WW	ADG	YW	MLK	HPG	CEM	STY	MRB	REA	HB	GM
18	-6.8	50	0.18	79	33	9	9	20	0.48	-0.20	98	33
3%	1%	83%	77%	81%	2%	87%	10%	4%	33%	97%	5%	54%

Age of Dam: 6 | Dam Weight: 1140 | dMPPA: 99

109 HALFMAN DOMAIN MI H714
02-06-2020 | GKH: H714 | 1A (100%) | #4274425

BECKTON DOMINOR T122 Z1 BECKTON DOMINOR Z1 R610
3SCC DOMAIN A163 BKT LARKABEL R038 WA

3SCC EUCLA X723 BASIN HOBO 0545
BSKF EUCLA U278

BUF CRK THE RIGHT KIND U199 BUF CRK LANCER R017
HALFMANN MINERVA RK E746 BUF CRK SHOSHONE R353

HALFMANN MINERVA NB A793 HALFMANN NEBULA AAL Y593
HALFMANN MINERVA MS Y606

Individual Data	
act. BW	76
SC	35
Frame	M

CED	BW	WW	ADG	YW	MLK	HPG	CEM	STY	MRB	REA	HB	GM
15	-3.4	53	0.23	90	23	13	6	15	0.50	-0.03	67	41
17%	21%	74%	45%	62%	66%	22%	74%	59%	29%	79%	43%	33%

Age of Dam: 3 | Dam Weight: 800 | dMPPA: 97

110 HALFMAN BENELLI SU H804
03-01-2020 | GKH: H804 | 1A (100%) | #4274341

BECKTON ACCENT Y312 N3 BECKTON ACCENT U777 C2
HALFMANN BENELLI CC E773 BKT LARKEISA S055 NB

HALFMANN CHOCTAW NC B007 LSF NIGHT CALVER 9921W
HALFMANN CHOCTAW NB Z703

RP SUPERIOR 1223 JH SUPERHI 49
HALFMANN SUPERIOR CC B027 RP MARIE 142

HALFMANN CHOCTAW CHIEF C304 CHOCTAW CHIEF 373
JAN 9617 MILLER CHIEF

Individual Data	
act. BW	
SC	42
Frame	M+

CED	BW	WW	ADG	YW	MLK	HPG	CEM	STY	MRB	REA	HB	GM
10	-0.7	69	0.19	100	32	13	5	16	0.42	0.14	63	15
85%	71%	18%	72%	41%	5%	17%	90%	45%	45%	40%	52%	87%

Age of Dam: 6 | Dam Weight: 1280 | dMPPA: 110

105 HALFMAN MERLIN IN H694
02-03-2020 | GKH: H694 | 1A (100%) | #4274327

LJC MERLIN T179 LJC MISSION STATEMENT P27
WFL MERLIN 018A BUF CRK REDPRIDE N179

WFL COMMITMENT 042Y BROWN COMMITMENT S7206
WFL JEWELMAKER 9024

BECKTON JULIAN W743 H5 BECKTON JULIAN G5 S107
HALFMANN INDIGO JL A869 BECKTON KIT L399 HR

BECKTON INDIGO R567 WA BECKTON WARHAWK N560
BECKTON INDIGO N754 HR

Individual Data	
act. BW	59
SC	37
Frame	M+

CED	BW	WW	ADG	YW	MLK	HPG	CEM	STY	MRB	REA	HB	GM
19	-7.2	52	0.23	89	28	12	7	14	0.39	-0.05	52	37
1%	1%	77%	48%	66%	24%	40%	48%	74%	53%	82%	73%	43%

Age of Dam: 7 | Dam Weight: 1110 | dMPPA: 93

106 HALFMAN BENELLI CH H803
02-29-2020 | CFH: H803 | 1A (100%) | #4274635

BECKTON ACCENT Y312 N3 BECKTON ACCENT U777 C2
HALFMANN BENELLI CC E773 BKT LARKEISA S055 NB

HALFMANN CHOCTAW NC B007 LSF NIGHT CALVER 9921W
HALFMANN CHOCTAW NB Z703

BECKTON JULIAN A086 C6 BECKTON JULIAN X465 J5
HALFMANN CHIEF JL C315 BKT PINE MARIE W102 C

HALFMANN CHIEF NB A860 HALFMANN NEBULA AQ Y597
HALFMANN CHIEF WR Y591

Individual Data	
act. BW	60
SC	41
Frame	M

CED	BW	WW	ADG	YW	MLK	HPG	CEM	STY	MRB	REA	HB	GM
17	-6.5	54	0.20	87	28	16	8	13	0.54	-0.01	58	37
7%	1%	72%	66%	70%	21%	4%	33%	81%	22%	75%	62%	43%

Age of Dam: 5 | Dam Weight: 1080 | dMPPA: 96

111 HALFMAN BENELLI IN H837
03-21-2020 | GKH: H837 | 1A (100%) | #4274365

BECKTON ACCENT Y312 N3 BECKTON ACCENT U777 C2
HALFMANN BENELLI CC E773 BKT LARKEISA S055 NB

HALFMANN CHOCTAW NC B007 LSF NIGHT CALVER 9921W
HALFMANN CHOCTAW NB Z703

BROWN SYNERGY X7838 BECKTON NEBULA P F707
HALFMANN INDIGO SY C207 OBAR BROWN ABIGRACE T714

HALFMANN INDIGO JL A869 BECKTON JULIAN W743 H5
BECKTON INDIGO R567 WA

Individual Data	
act. BW	74
SC	38
Frame	M

CED	BW	WW	ADG	YW	MLK	HPG	CEM	STY	MRB	REA	HB	GM
15	-4.9	57	0.21	91	30	16	6	14	0.64	-0.25	63	43
22%	7%	62%	60%	62%	13%	3%	68%	72%	10%	99%	52%	30%

Age of Dam: 5 | Dam Weight: 1160 | dMPPA: 99

112 BECKTON ACCENT H799 L4
05-14-2020 | BSF: H799 | 1A (100%) | #4378399

BECKTON ACCENT W180 C2 BECKTON CODY K1 P014
BECKTON ACCENT D115 N3 BECKTON CHRISTY R046 CQ

BECKTON LARKABA W272 N BECKTON NEBULA EN S347
BECKTON LARKABA N643 HR

BECKTON LIKABLE U130 L2 BECKTON LIKABLE S633
BECKTON MINOLA D749 L BECKTON KIT S478 LN

BECKTON MINOLAA126 N BECKTON NEBULA W778 J4
BECKTON MINOLA S554 JE

Individual Data	
act. BW	68
SC	31.5
Frame	M-

CED	BW	WW	ADG	YW	MLK	HPG	CEM	STY	MRB	REA	HB	GM
19	-5.5	51	0.17	79	27	13	9	19	0.37	0.08	96	27
1%	4%	80%	82%	82%	30%	15%	19%	7%	58%	54%	6%	66%

Age of Dam: 4 | Dam Weight: 1035 | dMPPA:

If you are breeding heifers and raising your own replacements, better study this catalog till the very last lot. Over 100 lots deep H799 ranks in the top 10% or better for calving ease, Stayability, low feed intake (DMI) and HerdBuilder.

107 HALFMAN NIGHT CALVER H802
02-28-2020 | GKH: H802 | 1A (100%) | #4274437

LSF NIGHT CALVER 9921W MESSMER PACKER S008
HALFMANN NIGHT CALVER C206 LSF DELLA P4078 U8051

HALFMANN SANDMAN SY A784 BROWN SYNERGY X7838
HALFMANN SANDMAN DY Y620

BIEBER H HUGHES W109 BASIN HOBO 0545
HALFMANN TAMARA HG E777 BASIN ROSE 06T0

BECKTON TAMARA U011 LO BECKTON LOKI CL S284
BECKTON TAMARA S314 HU

Individual Data	
act. BW	67
SC	39
Frame	M

CED	BW	WW	ADG	YW	MLK	HPG	CEM	STY	MRB	REA	HB	GM
20	-6.3	56	0.21	90	30	13	12	15	0.41	0.11	82	38
1%	2%	66%	60%	64%	11%	25%	1%	52%	48%	46%	18%	40%

Age of Dam: 3 | Dam Weight: 1065 | dMPPA: 98

108 HALFMAN SYNERGY AN H821
03-10-2020 | GKH: H821 | 1A (100%) | #4274519

BECKTON NEBULA P P707 BECKTON NEBULA M045
BROWN SYNERGY X7838 BECKTON LANA M809 EP

C-BAR & BROWN ABIGRACE T714 LJC MISSION STATEMENT P27
BROWN MS ABIGRACE L7730

BECKTON NEBULA T269 E2 BECKTON NEBULA M045
BECKTON ANGEL X317 N BECKTON RUTH M967 EP

BECKTON ANGEL T772 NB BECKTON NEBULA L P093
BECKTON ANGEL N150 LN

Individual Data	
act. BW	66
SC	39
Frame	M

CED	BW	WW	ADG	YW	MLK	HPG	CEM	STY	MRB	REA	HB	GM
17	-6.9	44	0.18	74	30	11	9	17	0.48	-0.42	78	21
5%	1%	92%	78%	87%	9%	45%	11%	34%	33%	99%	24%	77%

Age of Dam: 10 | Dam Weight: 1190 | dMPPA: 99



We're already collecting data on the bulls for our October 2022 Sale!

Cattle are worked on foot as well as horseback to ensure their ease of handling.

Still Need Heifer Bulls?

...every bull on this page ranks between the best 1% and 10% for Calving Ease.



113 BECKTON SCAMP H657 C6
 04-17-2020 | BKT: H657 | 1A (100%) | #4376817

BECKTON SCAMP B720 L4 BECKTON SCAMP X458 H3
 BECKTON LARKABA Y448 L

BECKTON SCAMP E175 N5
 BECKTON BELGA W103 N BECKTON NEBULA T398 V3
 BECKTON BELGA T551 EP

BECKTON CLIFFTOP Y012 C4 BECKTON CLIFFTOP W692 E3
 BECKTON LANA W240 C

BECKTON LANA E910 C
 BECKTON LANA B973 S BECKTON SCAMP X458 H3
 BECKTON LANA W157 N

Individual Data	
act. BW	55
SC	34.5
Frame	M-

CED	BW	WW	ADG	YW	MLK	HPG	CEM	STY	MRB	REA	HB	GM
20	-6.9	51	0.24	90	29	7	10	15	0.35	-0.13	53	35
1%	1%	81%	37%	64%	18%	96%	3%	55%	63%	92%	72%	48%

Age of Dam: 3 | Dam Weight: 790 | dMPPA: 105

Less than 20 lots to go we find a best 1% Calving Ease bull that defies the antagonisms by ranking nearly as high for maternal calving ease. H657 began life 10% lighter than his herd mates but was 10% heavier by weaning.

118 HALFMAN SYNERGY MI H788
 02-21-2020 | GKH: H788 | 1A (100%) | #4274347

BECKTON NEBULA P P707 BECKTON NEBULA M045
 BECKTON LANA M809 EP

BROWN SYNERGY X7838
 C-BAR & BROWN ABIGRACE T714 LJC MISSION STATEMENT P27
 BROWN MS ABIGRACE L7730

BECKTON LEGEND Z689 J3 BECKTON LEGEND X561 J2
 BECKTON LARKABA W868 J

BECKTON MINOLA B090 L
 BECKTON MINOLA Z715 L BECKTON LOKI X833 H4
 BECKTON MINOLA X585 E

Individual Data	
act. BW	90
SC	41
Frame	M+

CED	BW	WW	ADG	YW	MLK	HPG	CEM	STY	MRB	REA	HB	GM
11	-1.3	59	0.21	93	31	10	6	17	0.57	-0.33	69	34
75%	59%	53%	60%	57%	8%	61%	78%	35%	17%	99%	41%	51%

Age of Dam: 6 | Dam Weight: 1220 | dMPPA: 103



BROWN SYNERGY X7838 - Sire of Lot 118

114 BECKTON ACCENT H208 E5
 03-17-2020 | BKT: H208 | 1A (100%) | #4377333

BECKTON LEGEND B653 C2 BECKTON ACCENT U777 C2
 BECKTON CHRISTY W779 C

BECKTON ACCENT F194 A4
 BECKTON SUFFEINA A190 A BECKTON ACCENT Y260 L3
 BECKTON SUFFEINA Y242 N

BECKTON EPIC D454 L7 BECKTON EPIC Y484 N6
 BECKTON ROSE W606 L

BECKTON LARKABA F933 E
 BECKTON LARKABA D800 N BECKTON NEBULA B620 E5
 BECKTON LARKABA B613 S

Individual Data	
act. BW	75
SC	37
Frame	S+

CED	BW	WW	ADG	YW	MLK	HPG	CEM	STY	MRB	REA	HB	GM
6	0.5	60	0.20	92	27	11	-3	18	0.41	-0.17	38	29
98%	88%	49%	67%	58%	33%	42%	99%	17%	48%	95%	92%	62%

Age of Dam: 2 | Dam Weight: 730 | dMPPA: 100

115 BECKTON DOMINOR H698 L9
 04-24-2020 | BKT: H698 | 1A (100%) | #4376773

BECKTON DOMINOR A378 W7 BECKTON DOMINOR Y005 V6
 BECKTON LANA Y541 W

BECKTON DOMINOR D495 W8
 BECKTON ENCINO X642 W BECKTON WARRIOR T248 L5
 BECKTON ENCINO S090 JT

BECKTON LEGEND Z689 J3 BECKTON LEGEND X561 J2
 BECKTON LARKABA W868 J

BECKTON PINE MARIE E319 L
 BKT PINE MARIE X688 N BECKTON NEBULA T398 V3
 BKT PINE MARIE T593 HT

Individual Data	
act. BW	54
SC	37.5
Frame	M-

CED	BW	WW	ADG	YW	MLK	HPG	CEM	STY	MRB	REA	HB	GM
18	-5.9	46	0.17	73	27	13	10	17	0.44	0.11	82	27
3%	2%	89%	85%	88%	28%	17%	7%	31%	41%	46%	18%	66%

Age of Dam: 3 | Dam Weight: 850 | dMPPA: 101

119 HALFMAN NIGHT CALVER H833
 03-20-2020 | CTH: H833 | 1A (100%) | #4274575

LSF NIGHT CALVER 9921W MESSMER PACKER S008
 LSF DELLA P4078 U8051

HALFMAN NIGHT CALVER C206
 HALFMAN SANDMAN SY A784 BROWN SYNERGY X7838
 HALFMAN SANDMAN DY Y620

BUF CRK THE RIGHT KIND U199 BUF CRK LANCER R017
 BUF CRK SHOSHONE R353

HALFMAN MATTIE RK E748
 HALFMAN MATTIE MS A845 HALFMAN MSTATEMNTAL X580
 HALFMAN MATTIE T336

Individual Data	
act. BW	72
SC	41
Frame	M+

CED	BW	WW	ADG	YW	MLK	HPG	CEM	STY	MRB	REA	HB	GM
16	-5.1	51	0.21	85	29	14	9	16	0.51	0.05	79	49
11%	5%	80%	63%	74%	14%	10%	11%	51%	27%	61%	22%	19%

Age of Dam: 3 | Dam Weight: 1050 | dMPPA: 95

Here almost 120 lots deep in the order is a H833 ranks in the top third of the breed for every economic index published by Red Angus. That's due to his excellent balance of calving ease, marbling and cow herd building traits.

120 HALFMAN CHROME MA H858
 04-06-2020 | GKH: H858 | 1A (100%) | #4274371

HALFMAN TAKEOVER SM C214 LSF TAKEOVER 9943W
 BECKTON KIT F468 JL

HALFMAN CHROME E818
 HALFMAN SIERRA NC C260 LSF NIGHT CALVER 9921W
 HALFMAN SIERRA SY A857

BECKTON EPIC R397 K BECKTON EPIC K F075
 BECKTON KIT F468 JL

HALFMAN MATTIE EP C242
 HALFMAN MATTIE CH Y660 HALFMAN CHATEAU U335
 HALFMAN MATTIE U334

Individual Data	
act. BW	67
SC	37
Frame	M+

CED	BW	WW	ADG	YW	MLK	HPG	CEM	STY	MRB	REA	HB	GM
17	-6.1	48	0.23	84	27	14	10	17	0.32	-0.11	84	30
4%	2%	87%	50%	75%	28%	14%	3%	35%	70%	91%	16%	60%

Age of Dam: 5 | Dam Weight: 1360 | dMPPA: 98

116 HALFMAN BENELLI GR H819
 03-08-2020 | CTH: H819 | 1A (100%) | #4274565

BECKTON ACCENT Y312 N3 BECKTON ACCENT U777 C2
 BKT LARKEISA S055 NB

HALFMAN BENELLI CC E773
 HALFMAN CHOCTAW NC B007 LSF NIGHT CALVER 9921W
 HALFMAN CHOCTAW NB Z703

BECKTON CLIFFTOP W692 E3 BKT CLIFFTOP TP R288
 BECKTON LYDIA S274 EP

HALFMAN GRANDE CT D553
 HALFMAN GRANDE HU A896 HALFMAN HUSTLER X542
 HALFMAN GRANDE I550

Individual Data	
act. BW	75
SC	38
Frame	M

CED	BW	WW	ADG	YW	MLK	HPG	CEM	STY	MRB	REA	HB	GM
12	-3.1	56	0.17	84	27	12	5	13	0.48	-0.20	60	27
58%	25%	64%	82%	75%	27%	32%	86%	78%	33%	97%	60%	67%

Age of Dam: 4 | Dam Weight: 1035 | dMPPA: 99

117 HALFMAN MERLIN CH H682
 02-01-2020 | GKH: H682 | 1A (100%) | #4274335

LJC MERLIN T179 LJC MISSION STATEMENT P27
 BUF CRK REDPRIDE N179

WFL MERLIN O18A
 WFL COMMITMENT 042Y BROWN COMMITMENT S7206
 WFL JEWELMAKER 9024

CHOCTAW CHIEF 373 CHOCTAW CHIEF
 KC ELZB OA 130

HALFMAN CHOCTAW CHIEF C304
 JAN 9617 MILLER CHIEF PBC D0202 6M H3554
 JDW 122 CHIGATAW 221

Individual Data	
act. BW	78
SC	38
Frame	M+

CED	BW	WW	ADG	YW	MLK	HPG	CEM	STY	MRB	REA	HB	GM
12	-3.6	59	0.19	90	35	6	6	19	0.48	-0.05	71	23
55%	18%	52%	73%	63%	1%	98%	72%	11%	33%	82%	36%	74%

Age of Dam: 17 | Dam Weight: ET | dMPPA: 99

121 HALFMAN BENELLI FL H848
 03-26-2020 | CFH: H848 | 1A (100%) | #4274647

BECKTON ACCENT Y312 N3 BECKTON ACCENT U777 C2
 BKT LARKEISA S055 NB

HALFMAN BENELLI CC E773
 HALFMAN CHOCTAW NC B007 LSF NIGHT CALVER 9921W
 HALFMAN CHOCTAW NB Z703

BECKTON ACCENT W180 C2 BECKTON CODY K1 P014
 BECKTON CHRISTY R046 CQ

HALFMAN SIERRA GN D471
 HALFMAN FLOWER NE B062 BECKTON NEW ERA Y194
 HALFMAN DESTINY T351

Individual Data	
act. BW	74
SC	39
Frame	M

CED	BW	WW	ADG	YW	MLK	HPG	CEM	STY	MRB	REA	HB	GM
14	-3.3	62	0.20	94	28	15	5	17	0.55	-0.06	77	32
35%	23%	43%	69%	56%	22%	6%	81%	34%	20%	84%	25%	54%

Age of Dam: 4 | Dam Weight: 1400 | dMPPA: 99

122 HALFMAN BENELLI AL H814
 03-05-2020 | CFH: H814 | 1A (100%) | #4274649

BECKTON ACCENT Y312 N3 BECKTON ACCENT U777 C2
 BKT LARKEISA S055 NB

HALFMAN BENELLI CC E773
 HALFMAN CHOCTAW NC B007 LSF NIGHT CALVER 9921W
 HALFMAN CHOCTAW NB Z703

BUF CRK THE RIGHT KIND U199 BUF CRK LANCER R017
 BUF CRK SHOSHONE R353

HALFMAN ALEXIS RK D485
 HALFMAN ALEXIS NB Y602 BECKTON NEBULA P P707
 HALFMAN MISS ALEXIS

Individual Data	
act. BW	72
SC	37
Frame	M

CED	BW	WW	ADG	YW	MLK	HPG	CEM	STY	MRB	REA	HB	GM
12	-3.3	58	0.21	91	30	16	5	14	0.49	-0.09	68	33
61%	23%	57%	65%	62%	11%	3%	81%	70%	32%	88%	42%	53%

Age of Dam: 4 | Dam Weight: 1265 | dMPPA: 101

123 **HALFMANN CHROME SM H841**
 03-23-2020 | GKH : H841 | 1A (100%) | #4274537

HALFMANN TAKEOVR SM C214 LSF TAKEOVER 9943W
 HALFMANN SANDMAN NB Z708

HALFMANN CHROME E818
 HALFMANN SIERRA NC C260 LSF NIGHT CALVER 9921W
 HALFMANN SIERRA SY A857

BECKTON NEBULA P P707 BECKTON NEBULA M045
 BECKTON LANA M809 EP

HALFMANN SANDMAN NB Z708
 HALFMANN SANDMAN M601 HALFMANN MARATHN M314
 HALFMANN SHRAPNEL J228

act. BW	75
SC	37
Frame	M+

CED	BW	WW	ADG	YW	MLK	HPG	CEM	STY	MRB	REA	HB	GM
18	-5.7	45	0.23	82	28	14	9	16	0.37	-0.08	58	35
2%	3%	91%	46%	78%	23%	13%	16%	51%	58%	87%	63%	49%

Age of Dam: 8 | Dam Weight: 1345 | dMPPA: 95

124 **BECKTON NEBULA H752 N5**
 05-04-2020 | BKT : H752 | 1A (100%) | #4376701

BECKTON NEBULA B557 J3 BECKTON NEBULA P P707
 BECKTON LARKABA T813 JC

BECKTON NEBULA F440 H4
 BECKTON MINOLA X638 H BECKTON HASTEN H S462
 BECKTON MINOLA N751 JL

BECKTON NEBULA B557 J3 BECKTON NEBULA P P707
 BECKTON LARKABA T813 JC

BECKTON TAMARA F770 N
 BECKTON TAMARA C360 E BECKTON EPIC X330 L6
 BECKTON TAMARA X628 E

act. BW	69
SC	34
Frame	M-

CED	BW	WW	ADG	YW	MLK	HPG	CEM	STY	MRB	REA	HB	GM
13	-2	68	0.20	100	28	10	6	17	0.55	-0.17	61	24
37%	46%	21%	68%	42%	20%	65%	62%	28%	20%	95%	56%	71%

Age of Dam: 2 | Dam Weight: 1035 | dMPPA: 109

128 **HALFMANN BENELLI CH H810**
 03-04-2020 | GKH : H810 | 1A (100%) | #4274411

BECKTON ACCENT Y312 N3 BECKTON ACCENT U777 C2
 BKT LARKEISA S055 NB

HALFMANN BENELLI CC E773
 HALFMANN CHOCTAW NC B007 LSF NIGHT CALVER 9921W
 HALFMANN CHOCTAW NB Z703

MRM 8016 J027 8207 MRM ZIA GRANDE 8016
 HALFMANN CHINOOK J027

HALFMANN CHIGAPRID 8207 D559
 HALFMANN CHIGAPRDE HS X547 BECKTON HALFMANNHUSTLR R588
 HALFMANN CHIGAPRIDE M605

act. BW	84
SC	37
Frame	M+

CED	BW	WW	ADG	YW	MLK	HPG	CEM	STY	MRB	REA	HB	GM
10	-1.3	62	0.21	95	23	15	4	15	0.48	-0.17	59	30
83%	59%	40%	65%	52%	68%	6%	94%	64%	33%	95%	61%	59%

Age of Dam: 4 | Dam Weight: 1285 | dMPPA: 91

129 **HALFMANN CHROME CH H861**
 04-12-2020 | CTH : H861 | 1A (100%) | #4274561

HALFMANN TAKEOVR SM C214 LSF TAKEOVER 9943W
 HALFMANN SANDMAN NB Z708

HALFMANN CHROME E818
 HALFMANN SIERRA NC C260 LSF NIGHT CALVER 9921W
 HALFMANN SIERRA SY A857

BUF CRK THE RIGHT KIND U199 BUF CRK LANCER R017
 BUF CRK SHOSHONE R353

HALFMANN CHIEF RK C258
 HALFMANN CHIEF DV Z707 HALFMANN DIVIDEND U398
 HALFMANN CHIEF S506

act. BW	84
SC	34
Frame	M

CED	BW	WW	ADG	YW	MLK	HPG	CEM	STY	MRB	REA	HB	GM
14	-3.5	51	0.21	85	27	13	8	17	0.35	0.04	70	32
28%	20%	81%	59%	73%	28%	18%	29%	37%	63%	63%	38%	56%

Age of Dam: 5 | Dam Weight: 1140 | dMPPA: 99

125 **BECKTON HUGHES H850 A3**
 06-01-2020 | BSF : H850 | 1A (100%) | #4377631

BIEBER H HUGHES W109 BASIN HOBO 0545
 BASIN ROSE 06T0

BECKTON HUGHES C463 N2
 BECKTON LAKME T689 NX BECKTON NEXUS L016
 BECKTON LAKME M669 EP

BECKTON ACCENT U777 C2 BECKTON CODY K1 P014
 BECKTON SUSAN R022 CQ

BECKTON MINOLA D350 A
 BECKTON MINOLA S464 EP BECKTON EPIC KM M115
 BECKTON MINOLA J409 LN

act. BW	83
SC	33
Frame	M-

CED	BW	WW	ADG	YW	MLK	HPG	CEM	STY	MRB	REA	HB	GM
12	-1.7	63	0.21	97	28	12	7	17	0.32	-0.02	74	2
54%	52%	38%	58%	47%	23%	35%	48%	37%	70%	77%	31%	98%

Age of Dam: 4 | Dam Weight: 1020 | dMPPA: 104

126 **BECKTON EPIC H831 C8**
 05-23-2020 | BSF : H831 | 1A (100%) | #4377653

BECKTON EPIC Y484 N6 BECKTON EPIC U749 D5
 BECKTON LYDIA S069 NB

BECKTON EPIC B319 L7
 BECKTON BELGA W405 L BECKTON LANCER F442 T
 BECKTON BELGA K285 JL

BECKTON CLIFFTOP Y012 C4 BECKTON CLIFFTOP W692 E3
 BECKTON LANA W240 C

BECKTON LARKABA E508 C
 BECKTON LARKABA B277 N BECKTON NEW ERA Y194
 BECKTON LARKABA U062 CB

act. BW	62
SC	34.5
Frame	M-

CED	BW	WW	ADG	YW	MLK	HPG	CEM	STY	MRB	REA	HB	GM
17	-4.4	53	0.22	88	28	9	7	15	0.50	-0.24	52	28
6%	10%	76%	53%	67%	26%	84%	55%	54%	29%	98%	74%	64%

Age of Dam: 3 | Dam Weight: 800 | dMPPA: 94

127 **BECKTON EPIC H697 L8**
 04-24-2020 | BSF : H697 | 1A (100%) | #4377759

BECKTON EPIC Y484 N6 BECKTON EPIC U749 D5
 BECKTON LYDIA S069 NB

BECKTON EPIC B319 L7
 BECKTON BELGA W405 L BECKTON LANCER F442 T
 BECKTON BELGA K285 JL

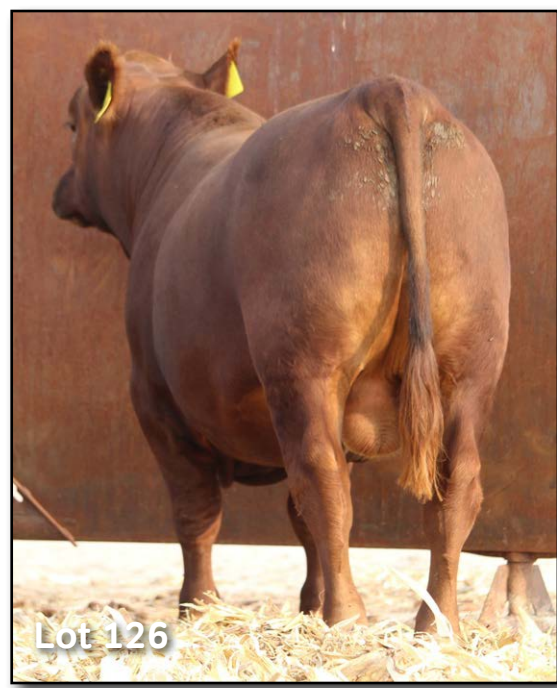
BECKTON LIKABLE B509 J3 BECKTON LIKABLE U130 L2
 BECKTON COCA T363 JL

BECKTON INDIGO E408 L
 BECKTON INDIGO A048 L BECKTON LIKABLE Y675 E3
 BECKTON INDIGO Y388 L

act. BW	57
SC	34.5
Frame	M-

CED	BW	WW	ADG	YW	MLK	HPG	CEM	STY	MRB	REA	HB	GM
19	-6.5	46	0.21	78	29	10	10	16	0.37	0.13	64	32
2%	1%	90%	65%	83%	19%	66%	7%	44%	58%	42%	50%	54%

Age of Dam: 3 | Dam Weight: 805 | dMPPA: 98



How the Halfmann-Beckton Commercial Female Sale will work:

- Commercial Females were videoed at their respective ranch of origin prior to the sale. That video will be available with the bull videos on Superior and at Halfmann.ag.
- The female lots will be sold in uniform groups according to age and pregnancy status.
- The winning bidder of any groups sold as "gate-cut" will have the option of "rolling" the remaining head in that group.
- The female lots include general descriptions of the cattle selling as well as deliver information. The Sale Day Supplement will have any updated palpation/ultrasound information and how that impacts the exact number of head in each lot.
- Halfmann commercial females sell FOB Miles, TX.
- Beckton will provide free trucking for purchases of 40+ head (any combination of Lots C4-C7) to Miles, Texas or equivalent (1150 miles).
- All commercial Females identified as "Bred" have been determined pregnant by a competent ultrasound or palpation technician.



C1 Halfmann	# Head	Age	Genetic Makeup	Estimated Calving Dates	Service Sire(s)
	23	Bred Heifers	Red Angus	(15) AI Bred due 01/15/22 (8) Natural Service due 01/25/22 through 03/11/22	AI to Brown Top Top G242 then exposed to Lots 4, and 36 Merlin sons.
Sold in three "gate cuts" of 5 AI bred then two cuts of 4 Nat. Serv. Bred. FOB Miles, TX					

C2 Halfmann	# Head	Age	Genetic Makeup	Estimated Calving Dates	Service Sire(s)
	11	(6) 5-8 yr olds (5) 2-4 yr old	Red Angus	AI Bred due on 10-16-21 Natural Service bred due on 11-7 through 12-14-21	AI to Brown Top Top G242 then exposed to Halfmann Chrome E818
Sell 5 head of 2-4 yr-olds, (2 bred to Brown Top Tier G242 and 3 bred to Halfmann Chrome E818) FOB Miles, TX					
Sell 6 head of 5-8 yr-olds, (all 6 bred to Brown Top Tier G242) FOB Miles, TX					

C3 Halfmann	# Head	Age	Genetic Makeup	Estimated Calving Dates	Service Sire(s)
	29	(12) 2-4 yr olds (17) 5-8 yr old	Red Angus	Natural Service due 2/10/21 through 3/21/22	Halfmann Red Angus Herdsires: 4118786, 4208382, 3716839, 3522613 & 1746187
Sell 2 "gate cuts" of 6 head of 2-4 yr-olds. FOB Miles, TX					
Sell 3 "gate cuts" of 6, 6 & 5 head each of 5-8 year olds. FOB Miles, TX					

C4 Beckton	# Head	Age	Genetic Makeup	Estimated Calving Dates	Service Sire(s)
	20	Bred Heifers	Red Angus	Starting 3/5/22	Beckton Calving Ease Herd Sires
Sold in one lot of 20 head.					

C5 Beckton	# Head	Age	Genetic Makeup	Estimated Calving Dates	Service Sire(s)
	40	2-5 year-olds	Red Angus	Starting 3/15/22	Beckton Calving Ease Herd Sires
Sold in two "gate cuts" of 20 head.					

C6 Beckton	# Head	Age	Genetic Makeup	Estimated Calving Dates	Service/Service Sire(s)
	40	2-5 year-olds	Red Angus	Starting 4/25/22	Beckton Calving Ease Herd Sires
Sold in two "gate cuts" of 20 head.					

C7 Beckton	# Head	Age	Genetic Makeup	Estimated Calving Dates	Service/Service Sire(s)
	20	6-9 year-olds	Red Angus	Starting 3/15/22	Beckton Calving Ease Herd Sires
Sold in one lot of 20 head.					

*Beckton will provide FREE trucking for all purchases of 40+ head to Miles, TX or equivalent (1150 miles)

SWEETWATER

STEEL



Metal Building Products

Two Locations to Serve Your Needs

www.sweetwatersteel.com

Main Office

Sweetwater Steel Company
10416 NI-20
Sweetwater, Tx 79556
Located 4 miles west of Sweetwater
(Exit mile marker 240)
Phone: 325-235-3644
Toll Free: 800-982-3384
Fax: 325-235-3935



Store Hours
Mon-Fri: 8:00 a.m. - 5:00 p.m.
Sat: 8:00 a.m. - 11:30 a.m.

Branch Location

Sweetwater Steel Company
1047 Early Blvd
Early, Tx 76802
Located downtown Early on Hwy 67/377
Phone: 325-641-1345
Toll Free: 877-741-1345
Fax: 325-641-2834

Metal Building Products - Structural Steel - Fencing Supplies

ALL PRICES IN THIS CATALOGUE SUBJECT TO CHANGE WITHOUT NOTICE

Ref Sire	Reg	Name	Sons Selling	HB	GM	CED	BW	WW	YW	ADG	MM	HPG	CEM	STY	MRB	REA
A	1628086	WFL MERLIN 018A	1, 4, 13, 14, 21, 22, 24, 36, 37, 38, 49, 51, 52, 76, 77, 82, 105, 117	33	47	15	-4.4	80	129	0.31	38	7	6	12	0.46	0.3
B	1627789	5L BOURNE 117-48A	9, 10, 30, 31, 34, 35, 45, 46, 53, 66, 67, 90, 102	53	43	13	-4	74	115	0.25	31	22	4	11	0.69	0.19
C	3716465	HALFMANN BENELLI CC E773	93, 95, 96, 101, 106, 110, 111, 116, 121, 122, 128	51	40	10	-2.1	73	112	0.24	31	16	4	12	0.65	0.06
D	3775477	WFL PROFITMAKER E7030	23, 58, 59, 62, 64, 72, 73, 88, 103, 104	78	26	20	-7.6	65	99	0.21	38	7	10	17	0.41	0.09
E	3716839	HALFMANN CHROME E818	47, 48, 63, 74, 75, 120, 123, 129	70	42	21	-8	51	95	0.28	30	18	11	15	0.32	0.19
F	1703720	BROWN ORACLE B112	2, 3, 5, 11, 12, 32, 61	50	91	14	-2.1	85	140	0.34	15	8	7	16	0.79	0.87
G	1619642	3SCC DOMAIN A163	60, 79, 80, 81, 109	65	47	14	-1.4	63	106	0.27	22	14	3	18	0.64	0.02
H	1701524	5L TOPGUN 560-65B	20, 33, 65, 89, 91	74	72	20	-6.7	54	90	0.22	19	27	10	8	0.76	0.32
I	3778501	SCHULER SUPREMACY 7177E	19, 44, 78, 94	96	34	16	-3	56	102	0.29	29	20	9	19	0.37	0.19
J	1384811	BROWN SYNERGY X7838	50, 108, 118	73	43	16	-5.7	48	85	0.23	35	11	9	16	0.81	-0.34
K	1746187	HALFMANN NIGHT CALVER C206	92, 107, 119	109	56	22	-9	51	87	0.22	34	16	14	18	0.56	0.21
L	3551655	BECKTON EPIC D001 L7	42, 83, 127	52	48	17	-5.9	49	93	0.27	28	9	9	15	0.41	0.11
M	3776785	BECKTON CARDINAL E673 L	17, 25, 100	83	46	23	-7.4	60	98	0.24	27	13	12	17	0.58	0.4
N	3778379	SCHULER ORACLE-7142E	27, 29, 57	88	83	20	-4.9	60	103	0.27	20	10	12	18	0.89	0.36
O	3988710	BECKTON DOMINOR F207 A9	16, 70, 71	82	46	17	-2.6	61	103	0.26	29	13	9	20	0.53	0.03
P	1705764	BECKTON RANGER B006 D5	69, 85	22	59	15	-2.6	60	105	0.28	26	12	7	9	0.57	0.06
Q	3487375	BECKTON HUGHES C463 N2	54, 125	85	-2	14	-2.5	68	99	0.19	24	13	9	17	0.32	0.11
R	3551764	BECKTON LIKABLE D432 N3	87, 989,	86	35	18	-3.8	51	86	0.22	23	11	9	18	0.37	0.28
S	3551780	BECKTON ACCENT D115 N3	55, 112	102	28	18	-4.3	56	90	0.21	32	14	7	21	0.32	0.07
T	3551799	BECKTON DOMINOR D254 N8	41, 68	91	46	20	-5.8	46	82	0.22	30	12	11	20	0.44	0.22

Red Angus Returns

Calf enrollments in FCCP have increased 39% from 2015-2017 for the right reasons:

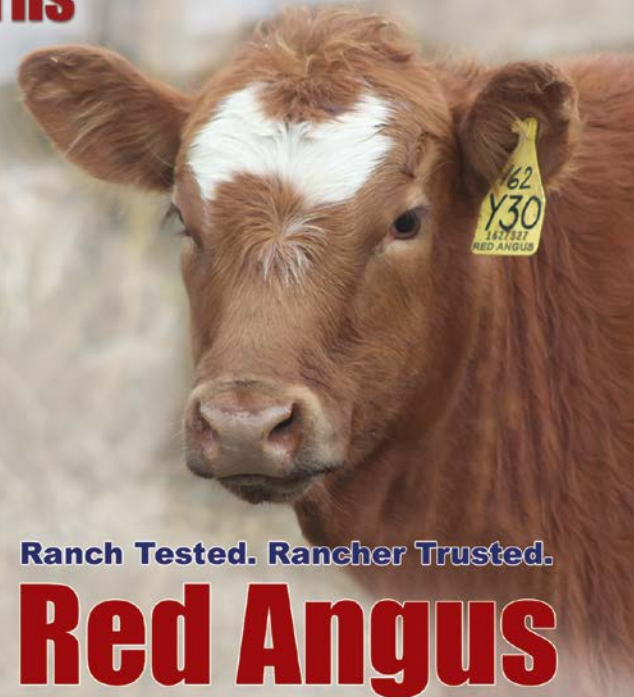
- Significant premiums
- Source verification for export markets
- Access to Angus product lines

Enrollees must verify:

- Traceability to at least 50 percent Red Angus breed influence
- Ranch of origin
- Group age

To enroll your calves and start earning industry-leading premiums, contact Chessie Mitchell, 940-387-3502, Ext. 2.

Visit RedAngus.org for more information.



Ranch Tested. Rancher Trusted.

Red Angus

BIDDING DISPUTES

The Auctioneer will settle any disputes as to bids, and his decision on such matters shall be final.

TERMS

Terms of sale are cash. All settlements will be made with the clerks of the sale immediately following the conclusion of the sale and before any cattle will be released.

PURCHASER'S RISK

Each animal becomes the risk of the Buyer as soon as sold. Insurance will be available sale day.

CERTIFICATE OF REGISTRY

A certificate of registry will be furnished to the Buyer for each animal after settlement has been made.

ANNOUNCEMENTS

Changes or errors in the information contained in this catalog relating to the animals offered for sale will be announced from the auction box and such announcements shall take precedence over printed matter in the catalog.

BREEDING GUARANTEE

All animals sold are guaranteed breeders by the Seller. All claims for adjustment or refund must be made in writing within six months of the sale date. In the event an animal is claimed to be a non-breeder, the purchaser may return the animal to the ranch of the seller if in good condition, free of disease, and complying with the health requirements of the Seller's state. The Seller will be entitled to six months trial following the return of the animal in which to prove that the animal is a breeder. If at the end of six months, the Seller shall be obligated, at his option, to refund the purchase price, replace the animal with another of equal value, or grant the buyer credit for use on cattle marketed by the seller. The return of the full purchase price shall, in any case, be deemed full satisfaction and settlement. If the Seller proved the animal to be a breeder, it shall be the obligation of the purchaser to take delivery of the animal at the purchaser's expense. All animals are guaranteed to be breeders, with the exception of a) calves under twelve months of age; or b) animals shown by Purchaser after sale; or c) gross negligence or willful misconduct on the part of the Purchaser.

SELLER'S SEMEN RIGHTS

Seller keeps a 50% revenue-sharing breeding interest without possession, in every bull in this catalog unless otherwise noted in this catalog or in the sale day supplement. In the event Seller elects to collect semen from a designated bull, it will be done at Seller's expense and during such time when purchaser is not using the bull for breeding.

Future semen collections of the bull must be made known to all owners prior to collecting. These collections and costs will be divided according to each owner's interest unless otherwise agreed upon mutually by all owners.

LIABILITY

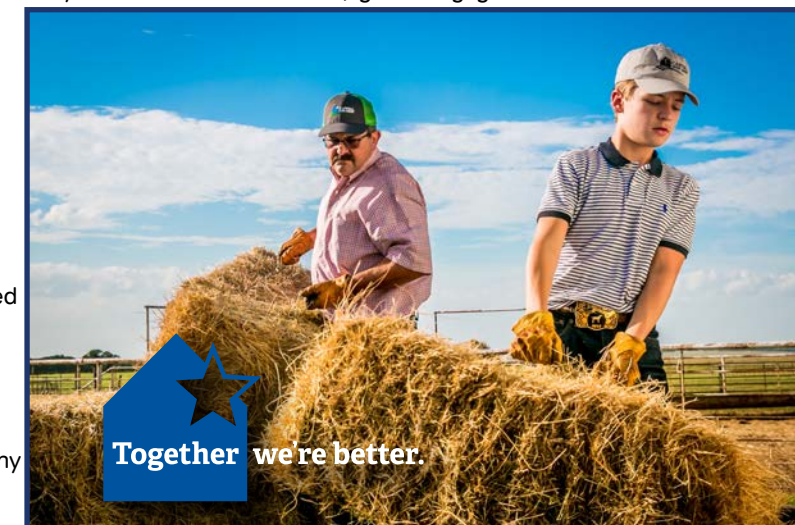
Neither owners, sale managers, clerks nor anyone connected with the sale assumes responsibility, legal or otherwise, for damage of any kind.

CONTRACT

The above terms and conditions shall constitute a contract between the buyer and seller of each animal sold.

IMPLIED WARRANTY

Except for those stated in the terms and conditions, there are no warranties or implies, as to merchantability or fitness for a particular purpose with respect to the cattle being sold in this auction. The warranties set forth in the terms and conditions are in lieu of all other warranties, either expressed or implied, and the remedies provided therein shall be the sole and exclusive remedy of the buyer, or any party claiming through the buyer, for any breach of warranty or guarantee therein provided and all other obligations or liabilities.



At Capital Farm Credit, we do things differently. We're a cooperative—that means we're owned by the same ranchers, farmers and agribusinesses we serve. Whether you're looking for operating capital, a beginning rancher loan or need help navigating a rural land purchase, your goals are our goals.

Partnership that really pays.



SAN ANGELO 325.949.8114
5255 Bentwood Drive

capitalfarmcredit.com
NMLS493828



Red Angus Breeder since 1964

2501 CR 357

Miles, TX 76861

325.468.2390

info@halfmann.ag

halfmann.ag



2021 Halfmann - Beckton
Profit Through Experience Sale

Wednesday, October 6, 2021 • 1 pm • at the ranch in Miles, TX